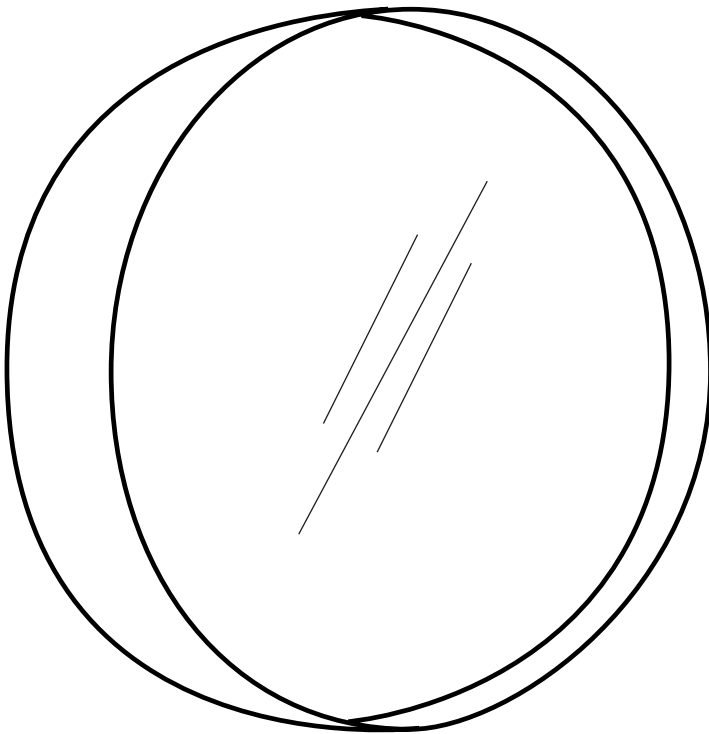


halo salon mirror

#8719

HALO





IMPORTANT PLEASE READ THESE SAFETY INSTRUCTIONS

GENERAL SAFETY

1. Read carefully and keep these instructions in a safe place.
2. Use this product only for its intended function and do not use attachments not recommended by the manufacturer.
3. Do not use outdoors.



WEIGHT: 18kg



PLEASE USE CORRECT FIXTURES FOR MOUNTING BASED ON WALL TYPE. NO RESPONSIBILITY IS ACCEPTED FOR ANY DAMAGE OR INJURY CAUSED BY INCORRECT MOUNTING.

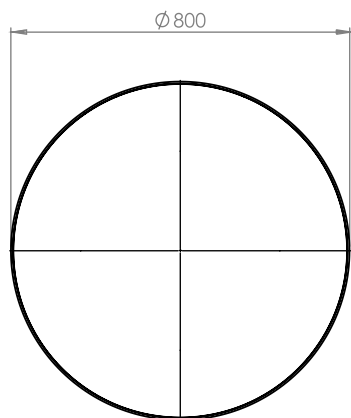
GET STARTED

HALO

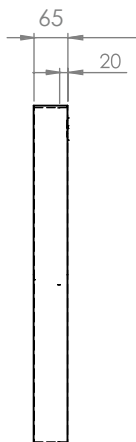
Salon Mirror

Material: Brass Chrome Plated Steel

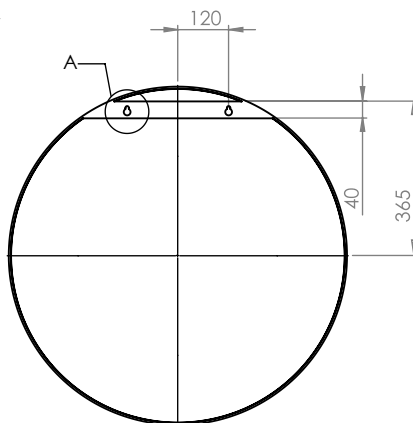
FRONT VIEW



SIDE VIEW



BACK VIEW



All measurements are in MM.

BEFORE INSTALLING YOU SHOULD CONSIDER THE FOLLOWING:

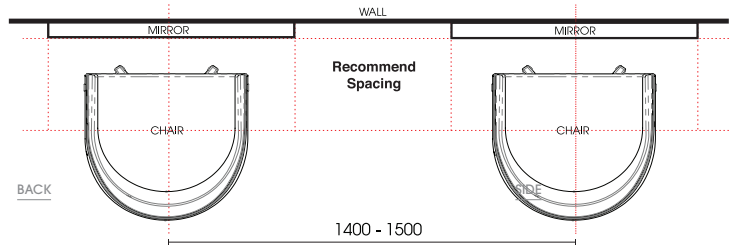
Allow for the necessary room around the unit for free movement.

If applicable, when installing a bench, position it so it is 800 - 850mm from the floor. This is the recommended bench height. Install mirror above bench to desired height according to the bench and bench height.

INSTALLATION & ASSEMBLY

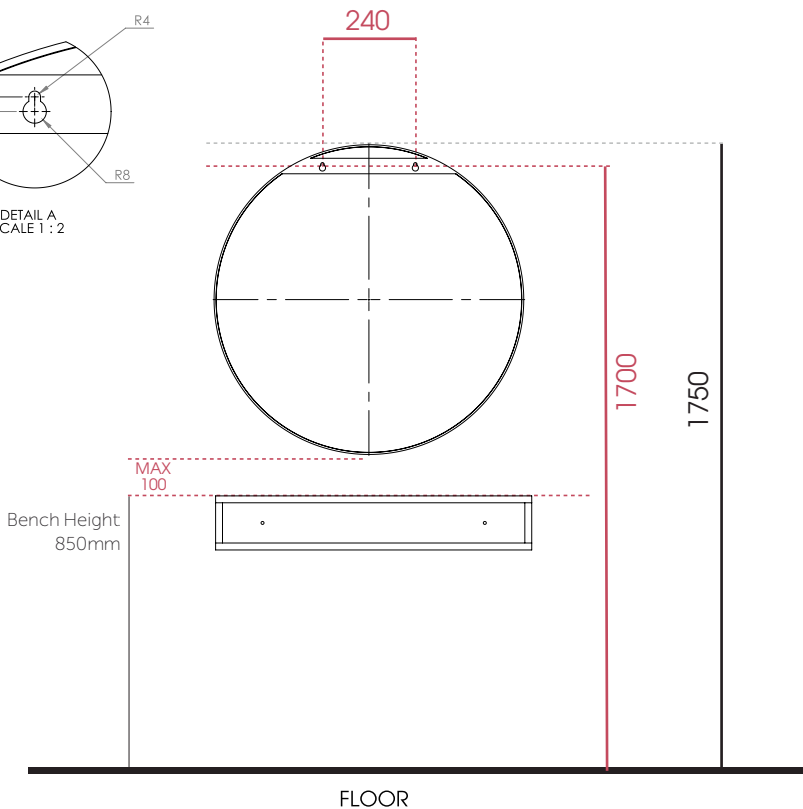
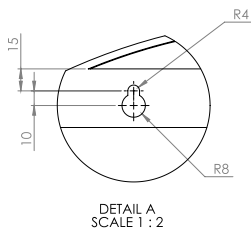
POSITION

Footprint : Floor View



POSITION

Wall Back



All measurements are in MM.

BEFORE INSTALLING YOU SHOULD CONSIDER THE FOLLOWING:

Allow for the necessary room around the unit for free movement. If applicable, when installing a bench, position it so it is 800 - 850mm from the floor. This is the recommended bench height. Install mirror above bench to desired height according to the bench and bench height.



PLEASE USE CORRECT FIXTURES FOR MOUNTING BASED ON WALL TYPE. NO RESPONSIBILITY IS ACCEPTED FOR ANY DAMAGE OR INJURY CAUSED BY INCORRECT MOUNTING.

CLEANING

GENERAL CLEANING

- We recommend the use of soapy water or approved cleaners.
- This product should not be cleaned with abrasive materials.
- Damage caused by any improper treatment is not covered by the product warranty.

MAINTENANCE

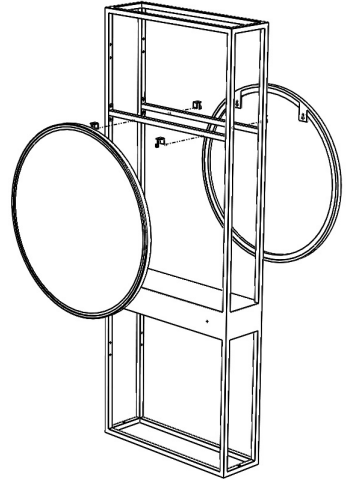
A periodic inspection of all components and fasteners should be made to ensure that your Comfortel product is structurally intact and functioning properly.

Damaged and broken parts should be replaced and loose fasteners tightened.

All maintenance to be carried out by a suitably qualified tradesperson.

MIRROR JOINER INSTALLATION

8055 COMFORTTEL SALON MIRROR JOINER



For Installation of mirror, install the cross bar on the second position. Use the Hanger Hook supplied with the mirror joiner & install into position as pictured.

comfortel

help.comfortel.com.au

PRODUCT CODE

#8719 HALO ROUND SALON MIRROR

Revision Date: 14.07.2020

©Comfortel Furniture. All rights are reserved. No part of this document may be photocopied, reproduced or translated to another language without written consent of Comfortel Furniture Pty Ltd.

The information contained in this document is subject to change without notice and should not be construed as a commitment by Comfortel Furniture Pty Ltd.

Comfortel Furniture Pty Ltd. assumes no responsibility for any errors that may appear in this document nor does it make expressed or implied warranty of any kind with regard to this material, including, but not limited to, the implied warranties of merchantability and fitness for a particular purpose.

Comfortel Furniture Pty Ltd. shall not be liable for incidental or consequential damages in connection with or arising out of the use of this document and the program material.

PLEASE RETAIN THIS INFORMATION FOR FUTURE REFERENCE

For more information about our products and services, contact us at comfortel.com.au

PURCHASE DATE

INVOICE NUMBER

NOTE YOUR PURCHASE DATE & INVOICE NUMBER FOR FUTURE REFERENCE