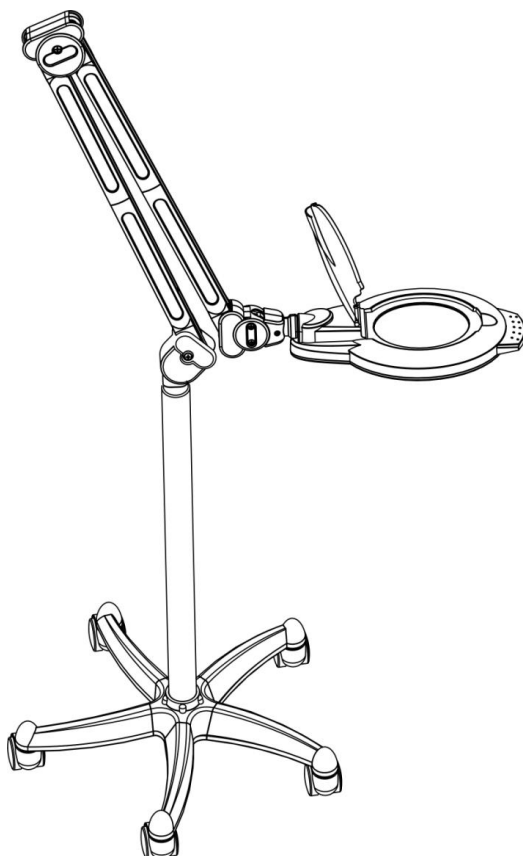


LED magnifying lamp stand

#7670 LED MAGNIFYING LAMP STAND



IMPORTANT PLEASE READ THESE SAFETY INSTRUCTIONS

GENERAL SAFETY

1. Read carefully and keep these instructions in a safe place.
2. Use this product only for its intended function and do not use attachments not recommended by the manufacturer.
3. Do not use outdoors.

PRECAUTIONS

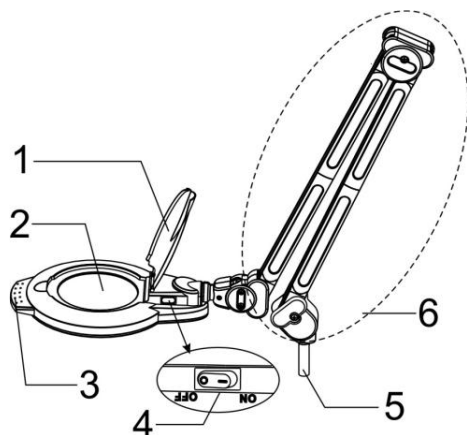
1. The lamp should never be placed too close to the skin, or touching the skin.
2. Cover the client's eyes before positioning the lamp over the face.

CAUTION: WHEN ADJUSTING THE LAMP TAKE CARE NOT TO GET THE ELECTRICAL CORD TANGLED AROUND THE CLAMP OR LAMP STEM.

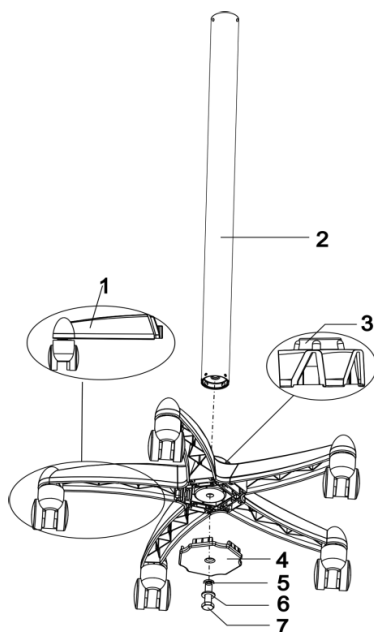
ELECTRICAL APPLIANCES

1. DO NOT allow children to operate in this product.
2. Turn the power off and remove the plug when not in use or when cleaning.
3. Do not let the power cord get damaged in any way.
4. Keep the power cord away from heat sources.
5. Do not use an extension cord unless the cord complies with local electrical safety standards.
6. Periodically inspect the power cord for signs of damage.
7. Do not operate any electrical item with a damaged power cord.

SPECIFICATIONS











1. ANTI - DUST COVER
2. MAGNIFYING LAMP GLASS
3. ADJUSTABLE HANDLE
4. POWER SWITCH
5. SETTING FASTEN COLUMN
6. MAGNIFYING LAMP ARM

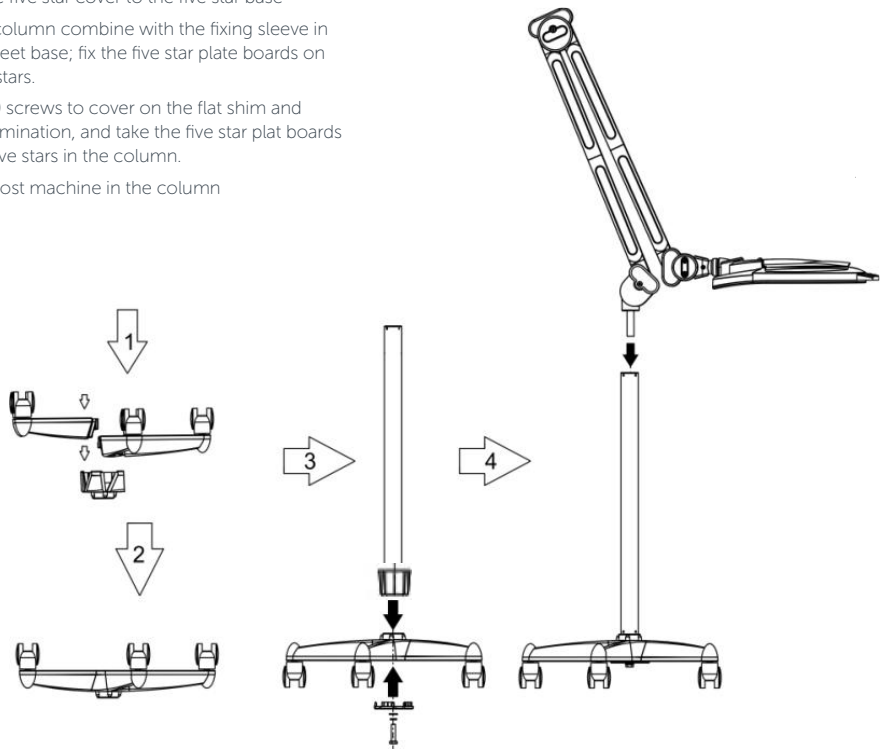


1. FIVE STAR FEET
2. COLUMN
3. FIVE STAR FEET BASE
4. FIVE STAR FEET FLAT BOARD
5. Ø10 GASKET
6. Ø10 SPRING
7. M10 BOLT
8. FIXING SLEEVE

GET STARTED : INSIDE THE BOX

DESCRIPTION		QUANTITY
LAMP		X1
COLUMN		X1
FIVE STAR STANDING LEG		X5
FIVE STAR BASE		X1
FIVE STAR PLAT BOARD		X1
M10 SCREWS		X1
WRENCH		X1
FIXING SLEEVE		X1

- 1. Press the five star cover to the five star base
- 2. Set the column combine with the fixing sleeve in the five feet base; fix the five star plate boards on the five stars.
- 3. Use M10 screws to cover on the flat shim and spring lamination, and take the five star plat boards on the five stars in the column.
- 4. Putthe host machine in the column



CAUTION: DO NOT USE LAMP IF FLEXIBLE CORD IS DAMAGED
ANY REPAIRS TO LIGHT MUST BE CONDUCTED BY A QUALIFIED ELECTRICIAN.
TO REPAIR FLEXIBLE CORD, USE TWO CORE SHEATHED CABLE ONLY.

HOW TO USE

OPERATING INSTRUCTIONS

- Plug power plug to the power socket
- Open anti-dust cover and adjust the lamp handles.
- Turn on the power switch and start beauty treatment.

ATTENTION:

- During setting or move magnifying lamp, don't let fingers in the middle of the upper and lower arms to avoid clamping (as shown in picture)
- Clean skin before treatment
- Turn off power after treatment/operation.
- Please unplug lamp from main power if not in use for a long period of time.
Make sure the machine is kept clean and in a suitable place.
- When stains appear on mirror, please wipe gently with clean soft cloth and water. Do not use alcohol or other chemicals to wipe the lens, otherwise it may damage the effective use of the lens.



WARNING

PLEASE DON'T PLACE LAMP IN HUMID ENVIRONMENT FOR EXAMPLE, THE BATHROOM.

PLEASE DO NOT PLACE LAMP IN DIRECT SUNLIGHT

IF POWER CORD IS DESTROYED, IT'S BETTER TO CHOOSE THE ACCESSORIES FROM THE ORIGINAL FACTORY.

CLEANING & CARE

BEFORE CLEANING MAKE SURE THE LAMP IS DISCONNECTED FROM THE ELECTRICAL SUPPLY

The unit requires no special maintenance. If it becomes heavily soiled it can be wiped with a damp cloth containing a mild soap solution. Do not use large quantities of liquid as it may enter shade housing and affect electrical safety.

DO NOT USE ALCOHOL, SOLVENTS OR ABRASIVE CLEANERS, AS THEY WILL DAMAGE THE PLASTIC HOUSING.

IMPORTANT: To clean the lens use a cotton cloth with warm soapy water or glass cleaner. Do not use abrasive cleaners, as they will damage the lens.

MAINTENANCE

A periodic inspection of all components and fasteners should be made to ensure that your Comfortel product is structurally intact and functioning properly.

Damaged and broken parts should be replaced and loose fasteners tightened.

All maintenance to be carried out by a suitably qualified tradesperson.

comfortel

help.comfortel.com.au

PRODUCT CODE

#7670 LED MAGNIFYING LAMP STAND

VOLTAGE: 85 - 265 V~ 50/60HZ

POWER: 5.5W

©Comfortel Furniture. All rights are reserved. No part of this document may be photocopied, reproduced or translated to another language without written consent of Comfortel Furniture Pty Ltd.

The information contained in this document is subject to change without notice and should not be construed as a commitment by Comfortel Furniture Pty Ltd.

Comfortel Furniture Pty Ltd. assumes no responsibility for any errors that may appear in this document nor does it make expressed or implied warranty of any kind with regard to this material, including, but not limited to, the implied warranties of merchantability and fitness for a particular purpose.

Comfortel Furniture Pty Ltd. shall not be liable for incidental or consequential damages in connection with or arising out of the use of this document and the program material.

PLEASE RETAIN THIS INFORMATION FOR FUTURE REFERENCE

WARRANTY PERIOD

TERMS AND CONDITIONS: For more information about our warranty, please refer to our website:

WARRANTY



PURCHASE DATE

INVOICE NUMBER

NOTE YOUR PURCHASE DATE & INVOICE NUMBER FOR FUTURE REFERENCE