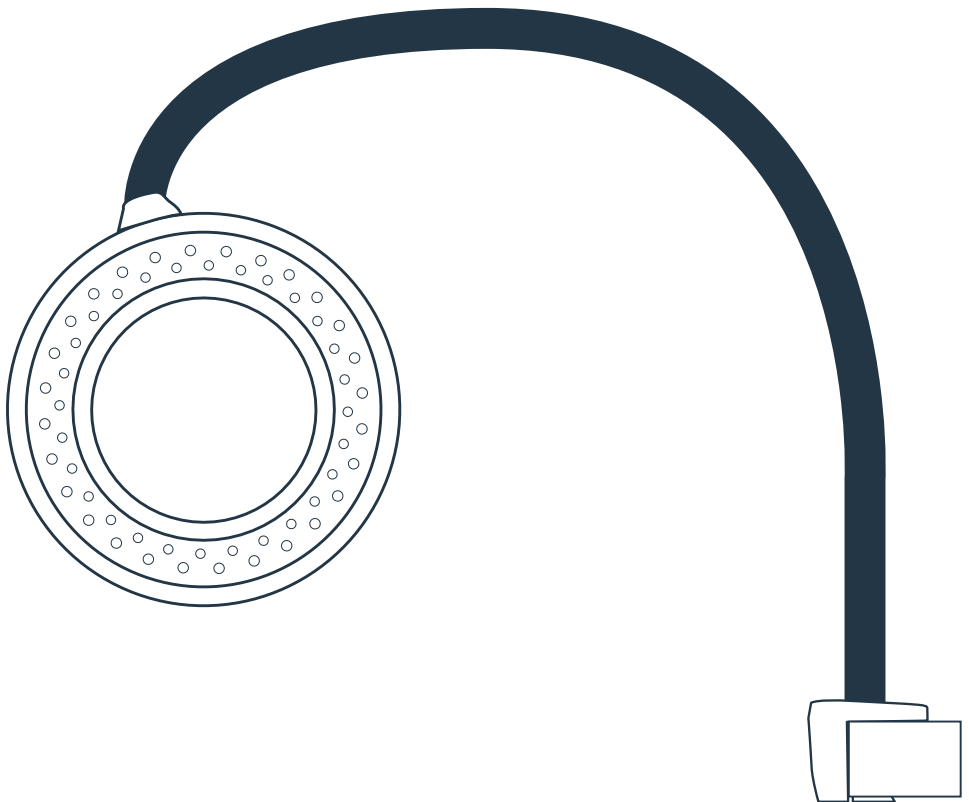


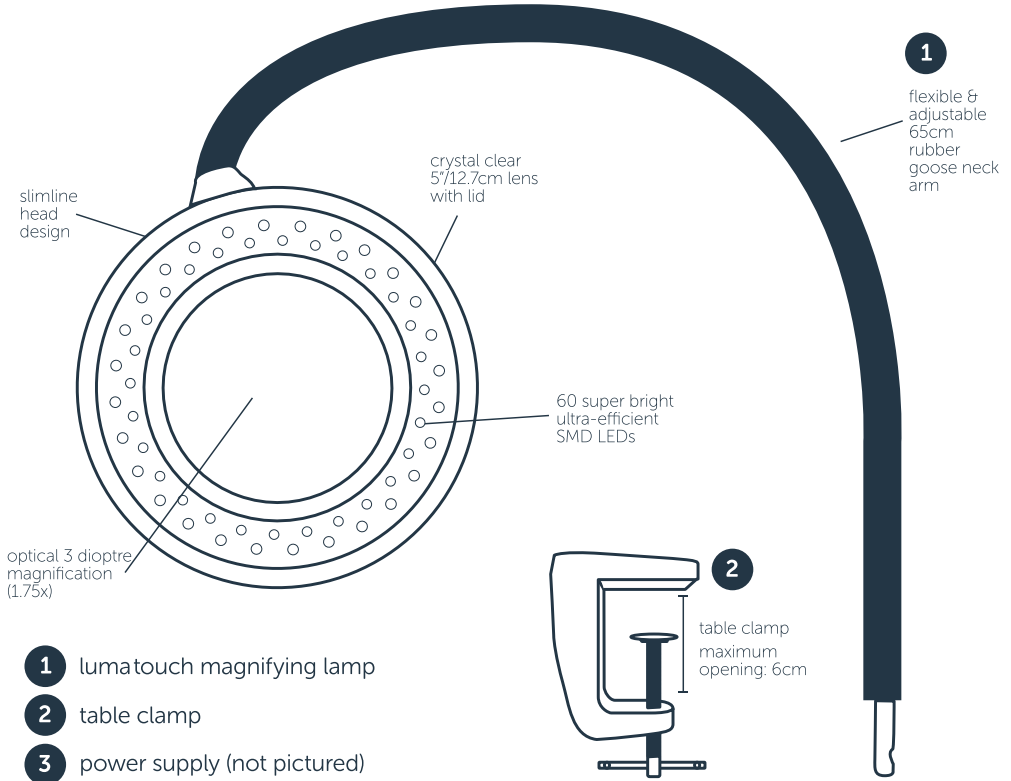
luma bendi

magnifying LED lamp with
flexible goose neck arm

#7661 LUMA BENDI LED MAGNIFYING LAMP WITH TABLE LAMP



GET STARTED



IMPORTANT PLEASE READ THESE SAFETY INSTRUCTIONS

GENERAL SAFETY

1. Read carefully and keep these instructions in a safe place.
2. Use this product only for its intended function and do not use attachments not recommended by the manufacturer.
3. Do not use outdoors.

PRECAUTIONS

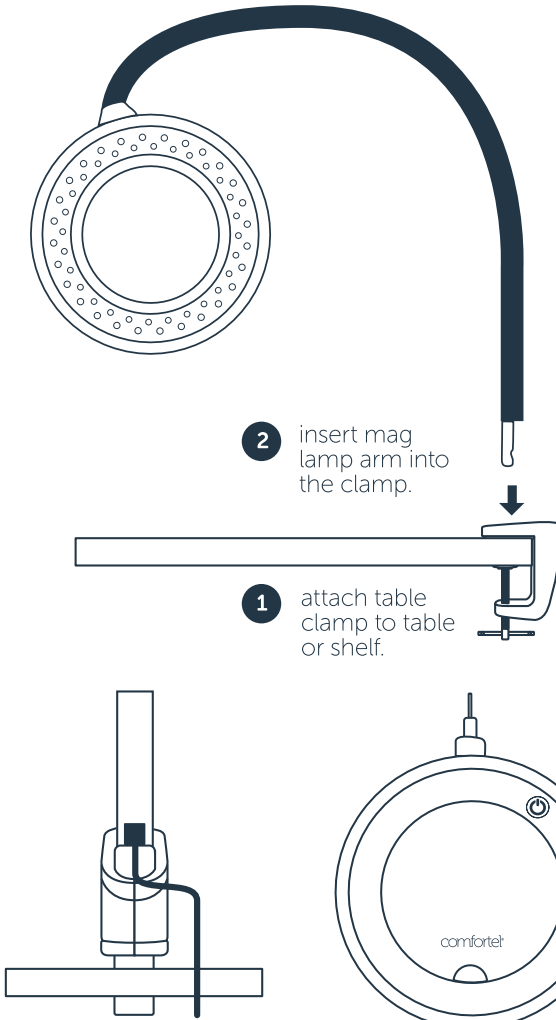
1. The lamp should never be placed too close to the skin, or touching the skin.
2. Cover the client's eyes before positioning the lamp over the face.

CAUTION: WHEN ADJUSTING THE LAMP TAKE CARE NOT TO GET THE ELECTRICAL CORD TANGLED AROUND THE CLAMP OR LAMP STEM.

ELECTRICAL APPLIANCES

1. DO NOT allow children to operate in this product.
2. Turn the power off and remove the plug when not in use or when cleaning.
3. Do not let the power cord get damaged in any way.
4. Keep the power cord away from heat sources.
5. Do not use an extension cord unless the cord complies with local electrical safety standards.
6. Periodically inspect the power cord for signs of damage.
7. Do not operate any electrical item with a damaged power cord.

INSTALLATION & ASSEMBLY



SET UP AND OPERATION

1. Before use remove all packaging from around the lamp
2. Securely fasten the supplied table clamp onto the edge of a table or workbench.
Please Note: It is important that the table clamp is secure BEFORE attaching the lamp. If the supplied clamp does not meet your exact requirements, there is an optional Wall Mount or Pedestal available from Comfortel.
3. Once the clamp is secure insert the stem of the lamp arm into the hole in the clamp.
4. Insert the plug-in power supply into a conveniently located wall plug. The Luma Touch Mag Lamp is now ready to use.
5. Turn on using the On/Off touch button on the head of the lamp.
6. Adjust temperature of lamp using the dimming touch controls.

ULTRA-EFFICIENT LED'S

The Luma Touch Mag Lamp is fitted with 60 LEDs which will last the lifetime of the lamp. No routine replacement is required.

CAUTION: Do not look directly at the lamp

LENS SAFETY

CAUTION: NEVER LEAVE THE LENS UNATTENDED IN DIRECT SUNLIGHT OR WHERE LIGHT CAN SHINE THROUGH. THIS CONSTITUTES A FIRE HAZARD. WHEN THE MAGNIFYING LAMP IS NOT IN USE, PLEASE REPLACE THE LENS COVER SUPPLIED.



CAUTION: DO NOT USE LAMP IF FLEXIBLE CORD IS DAMAGED

ANY REPAIRS TO LIGHT MUST BE CONDUCTED BY A QUALIFIED ELECTRICIAN.
TO REPAIR FLEXIBLE CORD, USE TWO CORE SHEATHED CABLE ONLY.

WARRANTY PERIOD

PERIOD AND DESCRIPTION	PRODUCTS
12 MONTHS PARTS & LABOR	All products
2 YEARS PARTS ONLY	All products excluding small electrical appliances
3 YEARS PARTS ONLY	All Linak electric actuators
5 YEARS PARTS ONLY	Taps cartridge, Ceramic basins

TERMS AND CONDITIONS

For more information about our terms and conditions including warranty, please refer to our website.

CLEANING

BEFORE CLEANING MAKE SURE THE LAMP IS DISCONNECTED FROM THE ELECTRICAL SUPPLY

The unit requires no special maintenance. If it becomes heavily soiled it can be wiped with a damp cloth containing a mild soap solution. Do not use large quantities of liquid as it may enter shade housing and affect electrical safety.

DO NOT USE ALCOHOL, SOLVENTS OR ABRASIVE CLEANERS, AS THEY WILL DAMAGE THE PLASTIC HOUSING.

IMPORTANT To clean the lens use a cotton cloth with warm soapy water or glass cleaner. Do not use abrasive cleaners, as they will damage the lens.

MAINTENANCE

A periodic inspection of all components and fasteners should be made to ensure that your product is structurally intact and functioning properly.

Damaged and broken parts should be replaced and loose fasteners tightened.

All maintenance to be carried out by a suitably qualified tradesperson.

comfortel

comfortel.com.au

PRODUCT CODE

#7661 LUMA BENDI
MAGNIFYING LAMP LED - WITH TABLE LAMP

60 LEDs, 20V DC

Revision Date: 05.12.2019

©Comfortel Furniture. All rights are reserved. No part of this document may be photocopied, reproduced or translated to another language without written consent of Comfortel Furniture Pty Ltd.

The information contained in this document is subject to change without notice and should not be construed as a commitment by Comfortel Furniture Pty Ltd.

Comfortel Furniture Pty Ltd. assumes no responsibility for any errors that may appear in this document nor does it make expressed or implied warranty of any kind with regard to this material, including, but not limited to, the implied warranties of merchantability and fitness for a particular purpose.

Comfortel Furniture Pty Ltd. shall not be liable for incidental or consequential damages in connection with or arising out of the use of this document and the program material.

PLEASE RETAIN THIS INFORMATION FOR FUTURE REFERENCE.

For more information about our products and services, contact us at comfortel.com.au

PURCHASE DATE

INVOICE NUMBER

NOTE YOUR PURCHASE DATE & INVOICE NUMBER FOR FUTURE REFERENCE