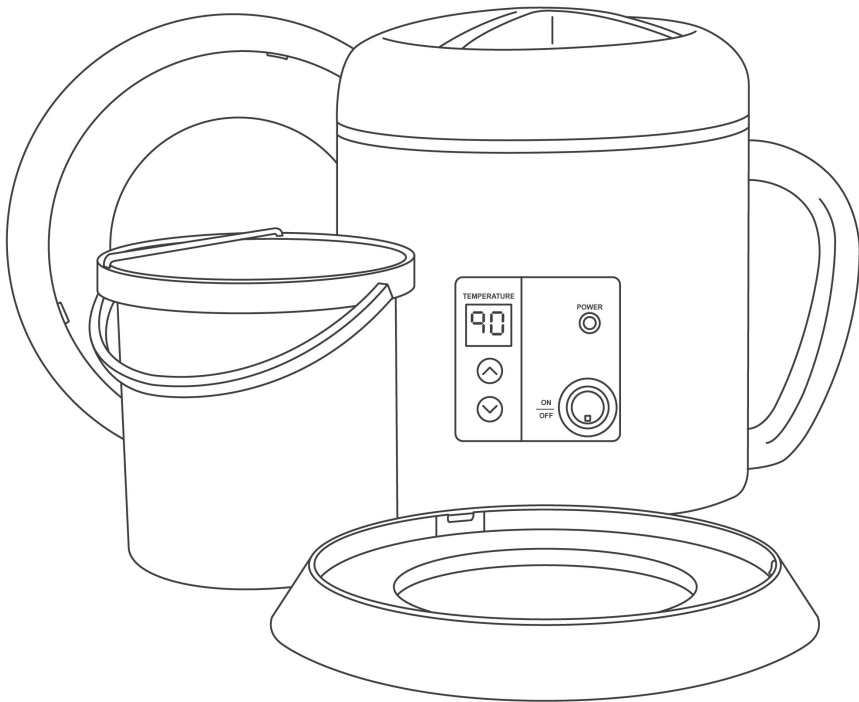
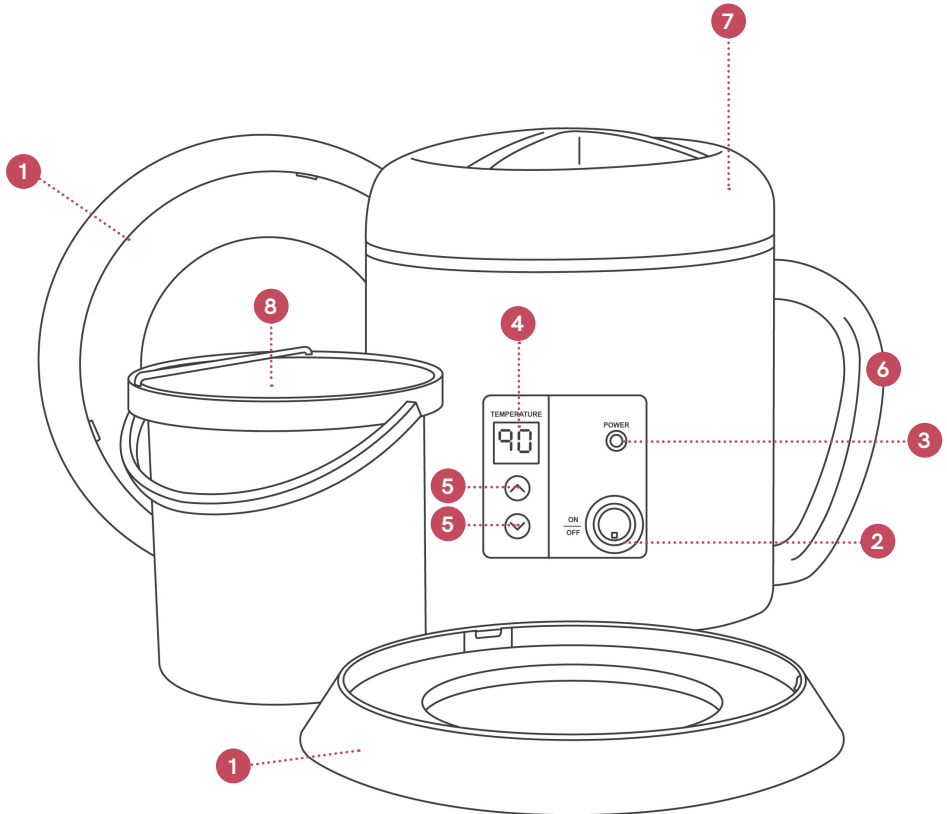


wax pot digital 1 litre

#6195 WAX POT DIGITAL



GET STARTED



WAX POT DIGITAL

Digital temperature control
1L Teflon coated internal pot

Included in this box

1 x 1 litre digital wax warmer
2 x drip collars (1 spare)
1 x locking lid
1 x Teflon coated inner container

PARTS

1. 2x drip collars (one can be locked into position as a protective collar and the other can be used on the base of the wax warmer or kept separately as a spare collar)
2. On/Off Supply Switch
3. Light to confirm power supply on/off
4. Digital display showing temperature setting
5. Push button temperature control
6. Sturdy handle for safe movement
7. Locking lid
8. Removable inner container with handle and scrape bar

IMPORTANT PLEASE READ THESE SAFETY INSTRUCTIONS

GENERAL SAFETY

1. Read carefully and keep these instructions in a safe place.
2. Use this product only for its intended function and do not use attachments not recommended by the manufacturer.
3. Do not use outdoors.

PRECAUTIONS

1. Do not use near water
2. Do not immerse the unit in water or use it in an area where it could be splashed.
3. Always unplug the unit before cleaning
4. Never leave the unit on when the container is empty
5. Never leave the wax warmer while the wax is HOT.

ELECTRICAL APPLIANCES

1. DO NOT allow children to operate in this product.
2. Turn the power off and remove the plug when not in use or when cleaning.
3. Do not let the power cord get damaged in any way.
4. Keep the power cord away from heat sources.
5. Do not use an extension cord unless the cord complies with local electrical safety standards.
6. Periodically inspect the power cord for signs of damage.
7. Do not operate any electrical item with a damaged power cord.



CAUTION: DO NOT USE IF FLEXIBLE CORD IS DAMAGED

ANY REPAIRS TO THIS UNIT MUST BE CONDUCTED BY A QUALIFIED ELECTRICIAN. TO REPAIR FLEXIBLE CORD, USE TWO CORE SHEATHED CABLE ONLY.

OPERATION

OPERATION

1. Plug the wax warmer into the power point
2. Place the quantity of wax in the removable inner container
3. Press on/off switch and confirm power supply (indicated by light marked power)
4. Using push button arrows select desire temperature
5. Note: To protect your wax warmers please ensure the temperature control is not set on the highest settings for more than 20 minutes. The high setting can be used for quick heating of wax but then the temperature setting must be adjusted downwards before use.
6. When the desired temperature has been reached, the digital display of the temperature will stop flashing.
7. The temperature will need to be set at a level suitable for the wax to be used and allow 30minutes for wax to reach desired temperature.
8. When finished using the wax warmer turn power OFF and unplug from the power point.
9. Wax is to be heated in the removable inner container. To heat different waxes, additional inner containers can be purchased. Please contact your supplier.
10. It is not recommended that original plastic containers for wax be inserted into the wax warmer as they are not suitable for direct heat.
11. Avoid re-dipping applicators. Single-use wooden spatula are recommended.
12. All types of wax both strip and hot wax should be kept undisturbed at a minimum temperature level of 70 °-80 °C for a minimum of 15 minutes between clients.

CLEANING

The unit should be cleaned with a liquid cleaner specifically formulated for the removal of wax.

Do not use solvents as they could damage the unit and may produce toxic fumes when the heater is operated.

Wax spilled onto the heater casing should be cleaned immediately. Keep all lights and switches free from any wax.

CAUTION: TO PREVENT DAMAGE TO THE APPLIANCE DO NOT USE ALKALINE CLEANING AGENTS WHEN CLEANING, USE A SOFT CLOTH AND A MILD DETERGENT.

MAINTENANCE

A periodic inspection of all components and fasteners should be made to ensure that your product is structurally intact and functioning properly.

Damaged and broken parts should be replaced and loose fasteners tightened.

All maintenance to be carried out by a suitably qualified tradesperson.

comfortel

help.comfortel.com.au

PRODUCT CODE

#6195 WAX POT DIGITAL

POWER 240V.50Hz
OUTPUT: 260W

Revision Date: 28.06.2018

©Comfortel Furniture 1997-2018. All rights are reserved.
No part of this document may be photocopied, reproduced or translated to another language without written consent of Comfortel Furniture Pty Ltd.

The information contained in this document is subject to change without notice and should not be construed as a commitment by Comfortel Furniture Pty Ltd.

Comfortel Furniture Pty Ltd. assumes no responsibility for any errors that may appear in this document nor does it make expressed or implied warranty of any kind with regard to this material, including, but not limited to, the implied warranties of merchantability and fitness for a particular purpose.

Comfortel Furniture Pty Ltd. shall not be liable for incidental or consequential damages in connection with or arising out of the use of this document and the program material.

PLEASE RETAIN THIS INFORMATION FOR FUTURE REFERENCE.

For more information about our products and services, contact us at comfortel.com.au

PURCHASE DATE

INVOICE NUMBER

NOTE YOUR PURCHASE DATE & INVOICE NUMBER FOR FUTURE REFERENCE