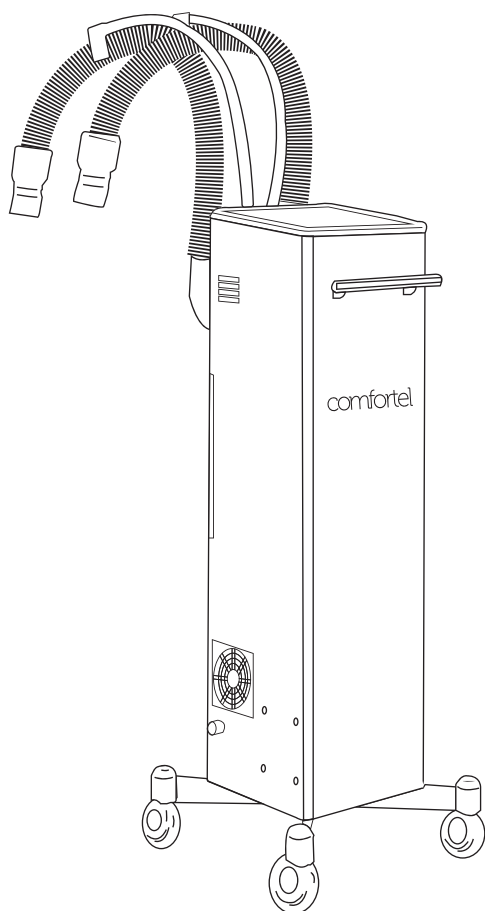


# salon mist

#5675.01 SALON MIST - HAIR TREATMENT PROCESSOR



**THIS PRODUCT IS INTENDED FOR  
COMMERCIAL/PROFESSIONAL USE ONLY**

## IMPORTANT PLEASE READ THESE SAFETY INSTRUCTIONS

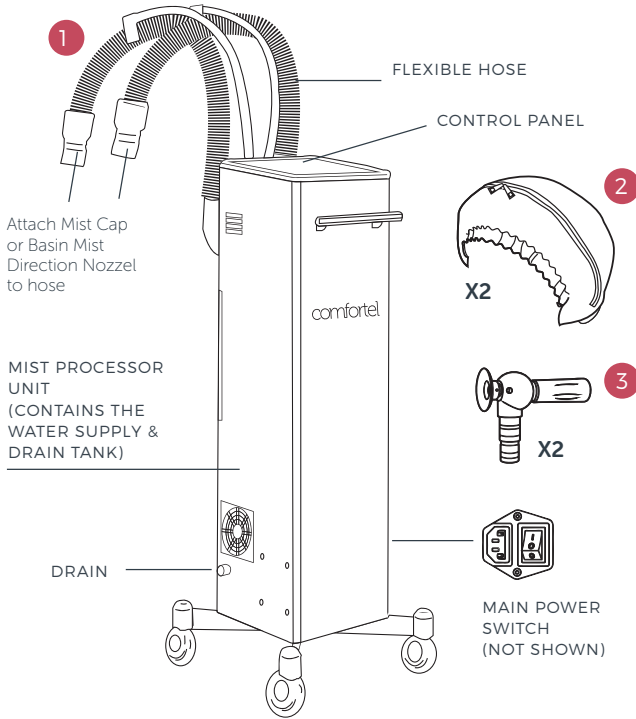
1. Read carefully and keep these instructions in a safe place.
2. Use this product only for its intended function and do not use attachments not recommended by the manufacturer.
3. Do not use outdoors.
4. This appliance is not intended for use by persons (including children) with reduced physical, sensory or mental capabilities, or lack of experience and knowledge, unless they have been given supervision or instruction concerning use of the appliance by person responsible for their safety.
5. Children should be supervised to ensure that they do not play with the appliance.
6. Periodically inspect the power cord for signs of damage. Keep the power cord away from heat sources.
7. Do not use an extension cord unless the cord complies with local electrical safety standards.
8. For additional protection, the installation of a residual current device (RCD) having a rated residual operating current not exceeding 30mA is advisable in the electrical circuit supplying the salon. Ask your installer for advice.
9. Turn the power off and remove the plug when not in use or when cleaning.
10. When the appliance is used in the shampoo area, unplug it after use since the proximity of water presents a hazard even when the appliance is switched off.
11. The appliance should be cleaned regularly to avoid the accumulation of grease and other residues.

## SAFETY PRECAUTIONS

- **General Safety:** Only qualified salon professionals should operate this machine.
- **Electrical Safety:** Always disconnect the power plug before maintenance.
- **Water Precautions:** Only use de-mineralised or distilled water in the water supply bottle.  
Avoid spilling water on the unit.
- **Heat Warning:** The machine produces high temperatures. Do not touch internal components.
- **Ventilation:** Ensure proper airflow around the machine to prevent overheating.
- **Placement:** Keep the unit on a stable, level surface. Do not tilt or invert it.

**DO NOT OPERATE ANY ELECTRICAL ITEM WITH A DAMAGED POWER CORD. IF THE SUPPLY CORD IS DAMAGED, IT MUST BE REPLACED BY THE MANUFACTURER, ITS AGENT OR SIMILARLY QUALIFIED PERSONS IN ORDER TO AVOID A HAZARD.**

## GET STARTED : INSIDE THE BOX



### PACKAGE INCLUDES

1. Salon Mist on Wheels with Dual Flexible Hoses
2. Mist Caps x 2
3. Basin Mist Direction Nozzel x 2

### MAIN COMPONENTS:

- Salon Mist Processor Unit: Contains the heating element and mist generator.
- Water-Supply: Holds water for mist generation (not shown)
- Drain Tank: Collects excess water after use (not shown)
- Flexible Hose: Directs mist to the client's head.
- Control Panel: Allows for customisation of mist settings.

### DIMENSIONS

Height - 85 cm

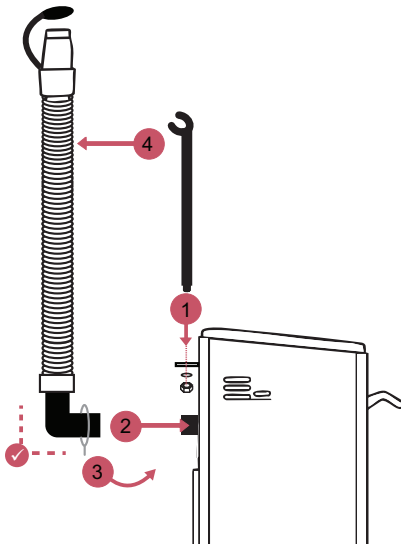
Width - 22 cm

Depth - 25.5cm

Length of Flexible Hose - 69-110cm

Weight: 5.7kgs

## ASSEMBLY : MIST HOSE & SUPPORT BRACKET



### 1. ATTACH THE GOOSE NECK SUPPORT

Remove the nut and washer from the goose neck support bracket. Insert into the top side of the metal bracket on unit – apply firm pressure if needed. Secure it tightly using the included screw and washer to hold in place.

### 2. CONNECT THE MIST HOSE

Insert the L-shaped fitting into the mist outlet on the side of the unit. Ensure the bend forms an "L" shape facing upward.

Note: If the hose bends downward, it's incorrectly installed.

### 3. SECURE WITH METAL RING

Flip metal ring to secure the hose fitting in place.

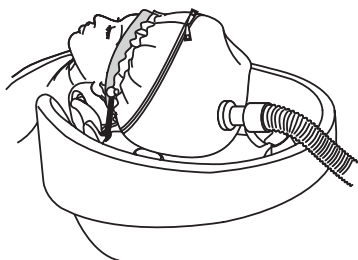
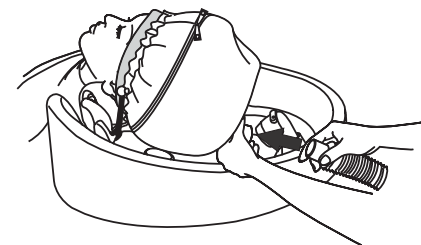
### 4. CONNECT MIST HOSE & GOOSE NECK SUPPORT

Connect the flexible mist hose to the Goose Neck Support. The top of the hose should feed into the support bracket loop to help guide and stabilise the hose during use.

## ASSEMBLY: MIST ACCESSORIES

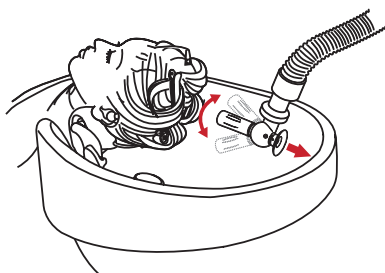
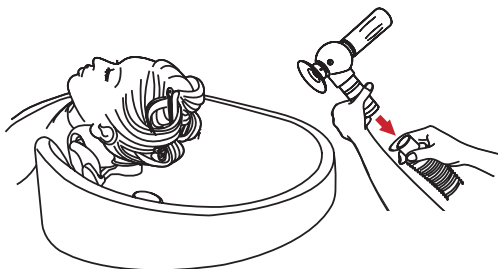
### MIST CAP

- Secure Mist Cap around the client's head and ensure there are no gaps to prevent mist leakage
- Connect Flexible Hose securely into the Mist Cap

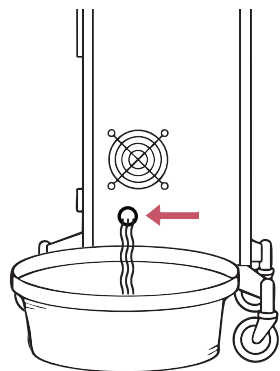


### BASIN MIST DIRECTION NOZZLE

- Insert the Basin Mist Direction Nozzle into the Flexible Hose until secure.
- Place the suction base inside the shampoo basin and press firmly to secure the nozzle in place.
- Rotate and angle the mist nozzle to direct the steam flow over the client's hair.



## SET UP & PREPARATION: DRAIN PIPE



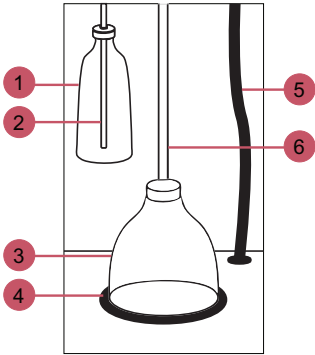
### TO EMPTY THE DRAIN PIPE

This should be done each time you refill the Water Reservoir Jar, especially after long use or periods of inactivity.

- Ensure the unit is turned off using the Main Power switch.
- Locate the drain pipe near the base of the unit
- Place a container beneath the outlet.
- Remove plug to release any remaining water.
- Once drained, return the pipe to its original position securely.

**Tip:** Regularly emptying the drain pipe helps prevent build-up, bacteria, & odours.

# SET UP & PREPARATION: WATER



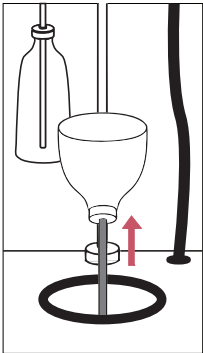
## INSIDE THE UNIT

- 1. Waste Water Bottle
- 2. Waste Water Tube
- 3. Water Reservoir Jar
- 4. Water Funnel
- 5. Power/Drain
- 6. Filter

## OZONE FIRST-TIME USE

Run the ozone function for 30 minutes before first use to disinfect the internal system.

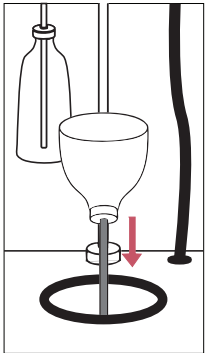
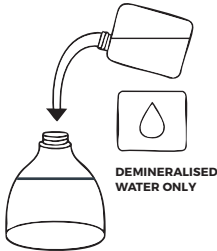
## TO FILL THE WATER RESERVOIR JAR



Lift an remove the Water Reservoir Jar.

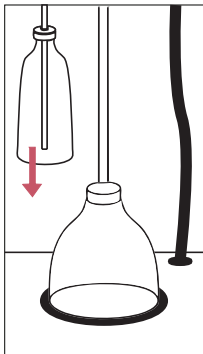


Unscrew the cap.  
Fill with demineralised water only.

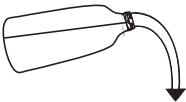
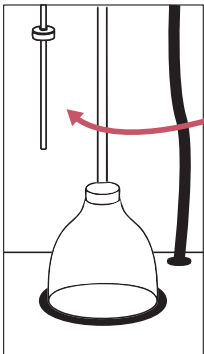


Reattach the cap securely.  
Insert the jar firmly into place until sealed

## TO EMPTY THE WASTE WATER BOTTLE



Unscrew and remove the Waste Water Bottle



Empty the bottle.  
Reconnect the bottle with tube inside.

## SALON MIST MODES & SETTINGS

Salon Mist offers three specialised modes designed to enhance conditioning hair treatments with precision-controlled steam and heat functions. Each mode ensures superior results for colouring, curls, and scalp or hair care.

### MIST

Press + / - to adjust the intensity of mist output from Level 1 (low) to Level 4 (high). Select a level based on hair density, desired effect, or type of treatment being applied.

### TIME

Use the + / - buttons to set the treatment duration (in minutes). The default is 10 minutes, and it can be adjusted based on the service being performed.

### TEMPERATURE

Adjust the mist temperature using the + / - buttons. Choose from 40°C to 60°C to suit the client's comfort level and treatment type. Lower temps are ideal for sensitive scalps, while higher settings help with deeper product absorption.



### P MODE: CURLS & DAMAGED HAIR

**DEFINED WAVES & DEEP REPAIR**  
For restoring elasticity and enhancing curl definition.

- **Even Heat Distribution** – Softens hair uniformly for consistent curl formation.
- **Fast & Effective** – Achieves defined curls or waves quickly.
- **Deep Nourishment** – Rehydrates and strengthens damaged hair.
- **Perm Enhancer** – Supports the results of perm services for longer lasting curls.

**Recommended Settings:**

- Temperature: 50°C
- Mist Grade: 1
- Duration: 10 minutes
- Mist Cap: Required

### C MODE: COLOUR CARE

**AFTER-COLOUR TREATMENT BOOST**

Enhance colour results after rinsing and shampooing. This mode supports the hair's recovery after chemical processing, while helping treatment products work more effectively.

- **Microscopic Mist Technology** – Opens the cuticle to allow deeper treatment absorption.
- **Seal Effect** – Helps lock in colour pigments, reduce fade, and boost shine.
- **Damage Control** – Gently restores softness and strength to freshly coloured hair.

**Recommended Settings:**

- Temperature: 45°C
- Mist Grade: 2
- Duration: 12 minutes
- Mist Cap: Optional

### T MODE: SCALP & HAIR CARE

**DEEP CLEANSING & HYDRATION**

Ideal for revitalising the scalp and restoring hair moisture, use during a Head Spa Treatment.

- **Pore-Opening Action** – Gentle steam lifts impurities from the scalp and hair.
- **Intensive Hydration** – Boosts absorption of treatment ingredients into the hair shaft.
- **Cuticle Support** – Prepares hair for treatment and locks in nourishment.
- **Relaxing Experience** – A soothing ritual that enhances any scalp or conditioning service.

**Recommended Settings:**

- Temperature: 55°C
- Mist Grade: 3
- Duration: 15 minutes
- Use: Ideal for warming the scalp before/after applying a cleansing or treatment agent.
- Mist Cap: Optional

**OZONE: [NOT TO BE USED DURING TREATMENTS]** The ozone feature releases oxygen-enriched mist with natural antibacterial properties to deeply cleanse the internal system.

**USE OZONE FOR CLEANING UNIT ONLY. REFER TO CLEANING & CARE SECTION FOR PROPER USAGE.**

# OPERATION

- **Main Power:** Plug in the unit and switch it on/off via the Main Power Switch located on the side of the unit.
- **Power On/Off via Control Panel:** Press On/Off to turn on unit.
- **Select Mode:** Press the desired mode button on the control panel.
- **Adjust Settings:** Modify time, temperature, and mist level as needed.
- **Preheating:** The unit will warm up before misting begins.
- **Start Treatment:** Press the Start button to begin mist generation.
- **Monitoring:** Observe the client for comfort and adjust settings if necessary.
- **Completion:** The unit will automatically cool down before shutting off. Remember to remove the mist cap and drain excess water.

## OZONE FIRST-TIME USE

Run the ozone function for 30 minutes before first use to disinfect the internal system.

## BEFORE USE / START OF DAY

Run the ozone function for 2–3 minutes to purify the system and ensure optimal hygiene before client services.

TROUBLESHOOTING	
NO MIST OUTPUT:	Ensure the water-supply bottle is filled and correctly inserted.
NO MIST OUTPUT/WATER LEAKAGE:	Check that all caps and hoses are securely fastened.
OVERHEATING:	Ensure proper ventilation and that the unit is not blocked.

# WHEN TO USE SALON MIST

Salon Mist is a versatile tool designed to enhance both dedicated Head Spa rituals and everyday salon services. Whether you're offering a full rejuvenating treatment or boosting colour results, Salon Mist helps elevate the experience and improve product performance.

## HEAD SPA

Head Spa is a dedicated scalp and hair treatment designed to cleanse, nourish, and deeply relax. Salon Mist plays a key role by enhancing treatment absorption and elevating the overall experience.

### Head Spa Steps:

**Cleanse:** Use a deep-cleansing shampoo to prep the scalp.

**Exfoliate & Massage :** Apply a scalp scrub or treatment cream and massage gently.

**Apply Treatment:** Use a mask or conditioner tailored to the client's needs.

**Activate with Salon Mist:** Mist for 5–10 minutes to open the cuticle and boost treatment performance.

**Rinse with HeadSpa Tap Set:** Use a waterfall tap to create a calming, spa-like finish.

**Finish:** Style as usual or apply a scalp tonic/serum.

**Benefits:** Salon Mist enhances hydration, improves shine, and delivers visible results, making it the hero of any Head Spa ritual.

## AFTER COLOUR OR TONER

**When:** After rinsing and shampooing colour or toner

**How:** Apply treatment or mask, mist for 5–10 minutes

**Benefits:** Opens the cuticle, enhances colour retention, improves softness and shine

## AFTER PERM SERVICES

**When:** After neutralising and rinsing

**How:** Apply a post-perm treatment, mist for 5–10 minutes

**Benefits:** Rebalances moisture, helps repair and reduce damage

## DEEP CONDITIONING TREATMENTS

**When:** After shampoo, before blow-dry

**How:** Apply a mask or cream treatment, mist under cap for 10 minutes

**Benefits:** Boosts treatment absorption, improves elasticity and manageability

## CUT & BLOW-DRY ENHANCER

**When:** After shampoo, as a bonus add-on

**How:** Apply a light treatment, mist for 5 minutes

**Benefits:** Adds shine, softness, and elevates the client's experience

# CLEANING & CARE

Ensure that the Salon Mist is cleaned to avoid the accumulation of grease and other residues.

## OZONE

### FIRST-TIME USE

Run the ozone function for 30 minutes before first use to disinfect the internal system.

### BEFORE USE / START OF DAY

Run the ozone function for 2–3 minutes to purify the system and ensure optimal hygiene before client services.

### DAILY MAINTENANCE

- Turn off and unplug the device before cleaning.
- Wipe external surfaces with a soft cloth and mild soapy water or a non-abrasive cleaner.
- Check and empty the Waste Water Bottle daily.
- If there is visible residue, wash the Water Reservoir Jar with soap and water.
- Regularly drain any remaining water using the Drain Pipe to prevent build-up and odours.



**CAUTION,  
HOT SURFACE**

**DO NOT fill the device with water while turned ON.  
To refill with water, turn OFF and unplug the device and let cool  
for 15 min. Refill with water once it has cooled down.**

comfortel

[help.comfortel.com.au](https://help.comfortel.com.au)

### PRODUCT CODE

#5675.01 SALON MIST - HAIR PROCESSOR

©Comfortel Furniture. All rights are reserved. No part of this document may be photocopied, reproduced or translated to another language without written consent of Comfortel Furniture Pty Ltd.

The information contained in this document is subject to change without notice and should not be construed as a commitment by Comfortel Furniture Pty Ltd.

Comfortel Furniture Pty Ltd. assumes no responsibility for any errors that may appear in this document nor does it make expressed or implied warranty of any kind with regard to this material, including, but not limited to, the implied warranties of merchantability and fitness for a particular purpose.

Comfortel Furniture Pty Ltd. shall not be liable for incidental or consequential damages in connection with or arising out of the use of this document and the program material.

**PLEASE RETAIN THIS INFORMATION FOR FUTURE REFERENCE**

### WARRANTY PERIOD

TERMS AND CONDITIONS. For more information about our warranty, please refer to our website:

WARRANTY



PURCHASE DATE

INVOICE NUMBER

NOTE YOUR PURCHASE DATE & INVOICE NUMBER FOR FUTURE REFERENCE