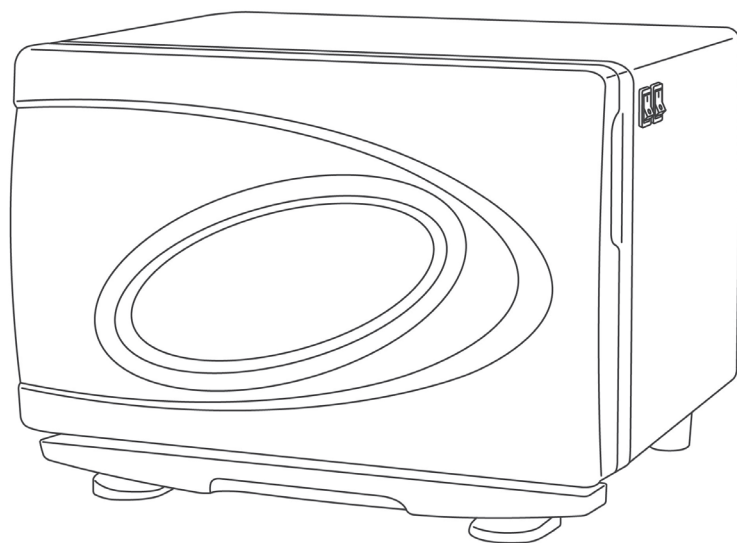


hot towel cabinet mini

#5270 HOT TOWEL CABINET - MINI



IMPORTANT PLEASE READ THESE SAFETY INSTRUCTIONS

GENERAL SAFETY

1. Read carefully and keep these instructions in a safe place.
2. Use this product only for its intended function and do not use attachments not recommended by the manufacturer.
3. Do not use outdoors.

PRECAUTIONS

1. The inside walls of the cabinet and the metal rack (4) become very hot while the cabinet is in use. Avoid touching these surfaces.
2. Do not operate the cabinet in a wet environment. The room temperature should be between 0-40°C
3. The towels can become very hot if they are kept in the cabinet for an extended period of time. Please check the temperature of the towels when taking them out of the cabinet, before using them on the skin.

ELECTRICAL APPLIANCES

1. DO NOT allow children to have access to or operate this product.
2. Turn the power off and remove the plug when not in use or when cleaning.
3. Keep the power cord away from heat sources.
4. Do not use an extension cord unless the cord complies with local electrical safety standards.
5. Periodically inspect the power cord for signs of damage.
6. Do not let the power cord get damaged in any way. Do not operate any electrical item with a damaged power cord.
7. Do not attempt to move the cabinet while it is in use.

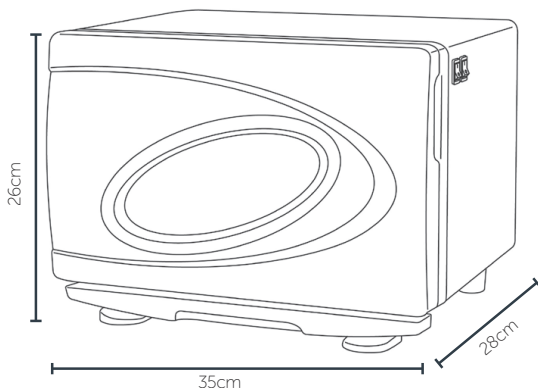


CARE SHOULD BE TAKEN THAT THE SKIN AND EYES OF THE USER IS NOT EXPOSED TO THE OZONE LIGHT FOR ANY EXTENDED PERIOD OF TIME. WHEN THE OZONE FUNCTION IS IN USE, KEEP THE DOOR CLOSED. AVOID LOOKING AT THE LIGHT WHEN OPENING THE CABINET.

GET STARTED

The function of the Hot Towel Cabinet is to warm, and then maintain the temperature of moist towels for use in facial and body treatments. The cabinet features an Ozone function on the back wall which can be turned on or off independently of the warming function. The Ozone function may help prevent the damp towels becoming stale or getting a musty odour while being stored in the cabinet.

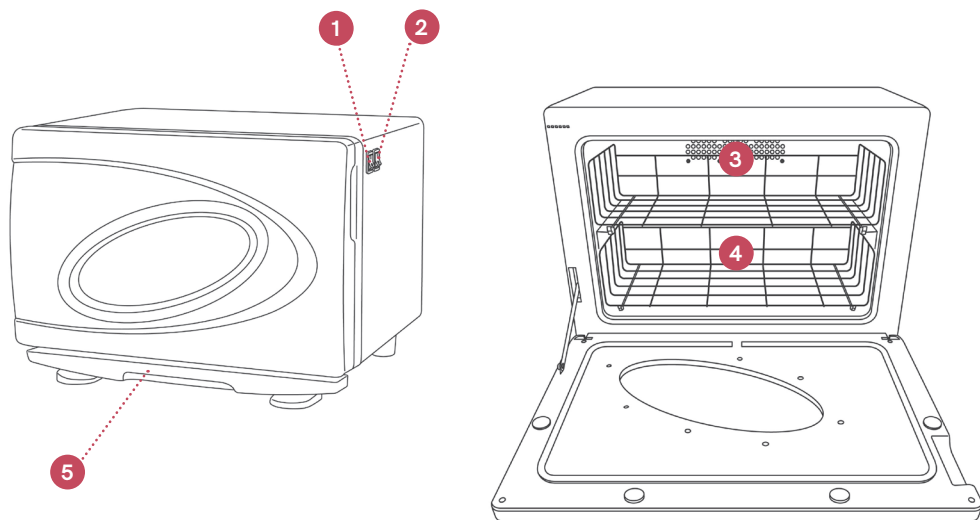
Please note: The Ozone function is not an appropriate method of sterilizing soiled or used items. The interior of the cabinet will reach around 80°C. It will maintain this temperature while the cabinet is turned on and in use.



#5270 HOT TOWEL CABINET - MINI

OPERATION

1. Set up cabinet on a level bench top or trolley. Ensure 5cm clearance on all sides of the cabinet.
2. Remove any plastic or foam packaging from the inside and outside of the cabinet.
3. Plug the power cord in at the wall point and turn on
4. Prepare towels. Dampen towels thoroughly with water then wring out excess water. Fold towels or roll into a cylindrical shape.
5. Place the damp towels into the cabinet, stacking them evenly.
6. Turn the Warming function switch (1) to "ON". A red light will illuminate to show that the function is working and the unit is now heating.
7. The towels will be ready to use in approximately 20-30minutes.
8. The Ozone function may be used by turning the switch (2) to "ON". A green light will illuminate to show that the Ozone function (5) is on.
9. The door should remain closed while the cabinet is in use. Open the door only when adding or removing towels.
10. You must turn both switches to "OFF" at the end of the day.
11. Remove unused towels at the end of the day or when not in use. Start with fresh towels every day.
12. The water drip tray (5) should be detached from the undercarriage of the cabinet and emptied at the end of each day. (It is attached by a metal clip at each front edge of the undercarriage.)
13. Leave the door open at the end of each day, after the unit is turned off.



PARTS:

1. ON/OFF Switch for Warming Function (Red Light)
2. ON/OFF Switch for Ozone Function (Green Light)
3. Ozone Outlet
4. Towel Rack
5. Water Drip Tray

CLEANING

BEFORE CLEANING MAKE SURE THE CABINET IS DISCONNECTED FROM THE ELECTRICAL SUPPLY

The unit requires no special maintenance. If it becomes heavily soiled it can be wiped with a damp cloth containing a mild soap solution. Do not use large quantities of liquid.

DO NOT USE ALCOHOL, SOLVENTS OR ABRASIVE CLEANERS, AS THEY WILL DAMAGE THE PLASTIC HOUSING.

MAINTENANCE

A periodic inspection of all components and fasteners should be made to ensure that your product is structurally intact and functioning properly.

Damaged and broken parts should be replaced and loose fasteners tightened.

Should any faults or problems occur, do not attempt to fix them yourself. Repairs should only be made by an approved electrical repairer. For any maintenance issues, contact Comfortel. All maintenance to be carried out by a suitably qualified tradesperson.

comfortel

help.comfortel.com.au

PRODUCT CODE

#5270 HOT TOWEL CABINET - MINI

VOLTAGE: 240V. 50HZ

POWER: 200W

©Comfortel Furniture. All rights are reserved. No part of this document may be photocopied, reproduced or translated to another language without written consent of Comfortel Furniture Pty Ltd.

The information contained in this document is subject to change without notice and should not be construed as a commitment by Comfortel Furniture Pty Ltd.

Comfortel Furniture Pty Ltd. assumes no responsibility for any errors that may appear in this document nor does it make expressed or implied warranty of any kind with regard to this material, including, but not limited to, the implied warranties of merchantability and fitness for a particular purpose.

Comfortel Furniture Pty Ltd. shall not be liable for incidental or consequential damages in connection with or arising out of the use of this document and the program material.

PLEASE RETAIN THIS INFORMATION FOR FUTURE REFERENCE.

For more information about our products and services, contact us at comfortel.com.au

PURCHASE DATE

INVOICE NUMBER

NOTE YOUR PURCHASE DATE & INVOICE NUMBER FOR FUTURE REFERENCE

WARRANTY PERIOD

TERMS AND CONDITIONS: For more information about our warranty, please refer to help.comfortel.com.au