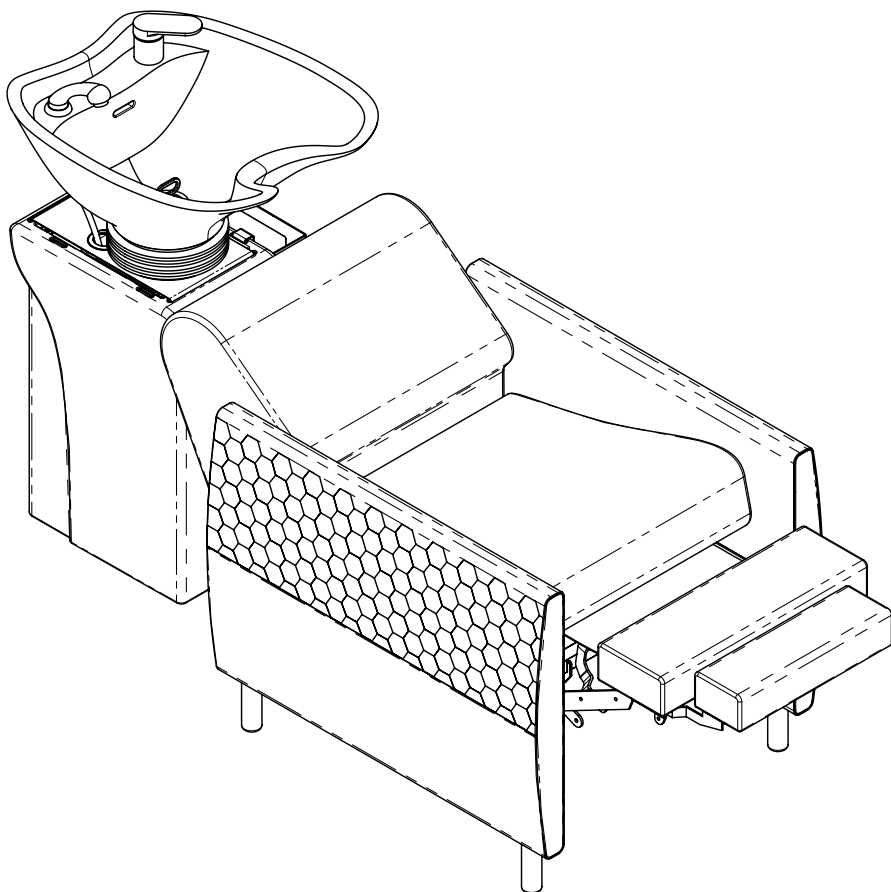


# ellen washlounge

#1537

ELLEN ELECTRIC WASHLOUNGE WITH MASSAGE





## IMPORTANT PLEASE READ THESE SAFETY INSTRUCTIONS

Listed below are essential safety precautions:

### GENERAL SAFETY

1. Read carefully and keep these instructions in a safe place.
2. Use this product only for its intended function and do not use attachments not recommended by the manufacturer.
3. Do not use outdoors.

### PLUMBING

1. This unit must be plumbed by a licensed plumber



**IMPORTANT**  
DO NOT ALLOW CHILDREN AROUND THE  
WASHLOUNGE WHEN IN USE

### ELECTRICAL APPLIANCES

1. All GPO's must be installed by a qualified Electrician in accordance with local electrical standards.
2. DO NOT allow children to operate the electric motors in this product.
3. Turn the power off and remove the plug when not in use.
4. Turn the power off and remove the plug when cleaning the chair cushions.
5. Do not let the power cord get damaged in any way.
6. Keep the power cord away from heat sources.
7. Do not use an extension cord unless the cord complies with local electrical safety standards.
8. Periodically inspect the power cord for signs of damage.
9. Do not operate any electrical item with a damaged power cord.

## GET STARTED

### HARRIET

Electric reclining wash lounge with massage.  
Optional basin colour of black or white.

**Width:** 700mm

**Length:** 1500mm-1900mm

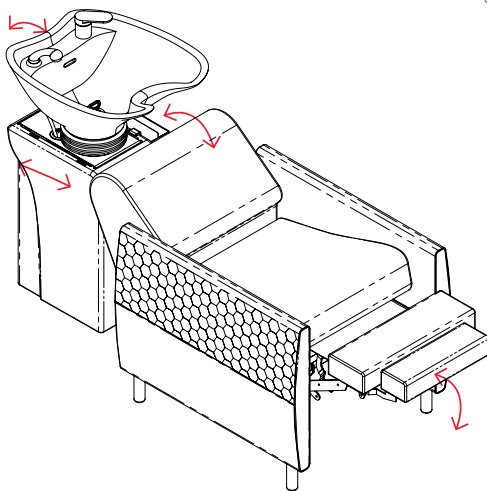
**Basin Height:** 900mm



WELS RATING  
★★★★★

### FUNCTIONS

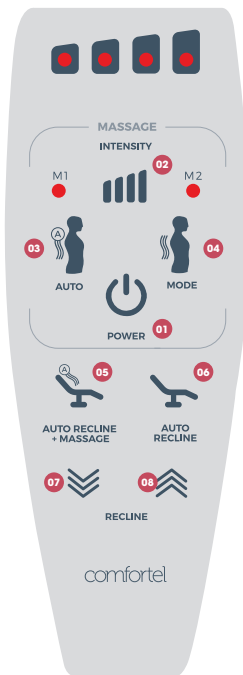
Sit in chair, using hand held remote the client can be reclined to suit the clients comfort.  
Optional foot control also available.



### OPERATION: HAND REMOTE MESSAGE & RECLINE

#### FUNCTIONS

1. Massage Power
2. Massage Intensity
3. Massage Auto Setting
4. Massage Custom Mode
5. Auto Recline & Massage
6. Auto Recline
7. Manual Recline Down
8. Manual Recline Up



FOR BEST SUPPORT PLEASE ADVISE  
CLIENT TO SIT WELL BACK INTO THE SEAT.

### OPTIONAL UPGRADES



**BATTERY BACKUP**  
Controls wash lounge  
when salon has no power

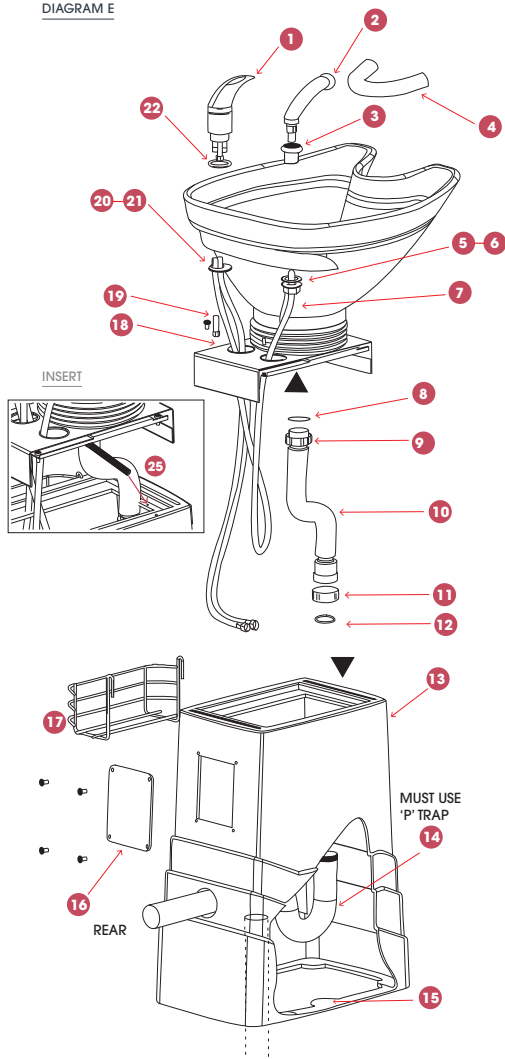


**FOOT CONTROL**

**GPO'S MUST BE INSTALLED BY A QUALIFIED ELECTRICIAN IN ACCORDANCE WITH AUSTRALIAN STANDARDS.**

# INSTALLATION & ASSEMBLY: BASIN STAND WITH STANDARD BASIN OPTION

DIAGRAM E



## BASIN ASSEMBLY

- |                           |                                  |
|---------------------------|----------------------------------|
| 1 Flick Mixer             | 13 Stand                         |
| 2 Showerhead              | 14 P trap (not supplied)         |
| 3 Showerhose basin collar | 15 Middle lugs                   |
| 4 Comfortneck             | 16 Rear Access Panel             |
| 5 Foam washers            | 17 Shampoo tray (optional extra) |
| 6 Plastic nut             | 18 Vinyl strap                   |
| 7 Showerhead hose         | 19 Long nut                      |
| 8 Flat seal               | 20 Plastic washers               |
| 9 Fitted flange           | 21 Metal washers                 |
| 10 Flexible waste pipe    | 22 O-ring                        |
| 11 Flange                 | 23 Basin Spring                  |
| 12 Seal                   |                                  |

## COMFORTEL PRODUCT

#10000SA-25A BASIN STAND WITH WHITE OR BLACK BASIN

## BEFORE INSTALLING YOU SHOULD CONSIDER THE FOLLOWING:

Allow for the necessary room around the unit for free movement.

- If installing against a wall, a minimum distance of 80mm between wall and bottom back of stand is required to allow free backward movement of basin.
- If plumbing location is in wall (see Diagram A), drill a hole in rear wall of stand. For neatness of finish it is preferable to bring water and waste into the stand in the same hole.
- If plumbing location is on floor (see Diagram A), place stand over.

## STAND ASSEMBLY

1. Position stand as required. If plumbing location is in wall drill hole in rear of stand; if plumbing location is on the floor place stand over. (P trap not supplied).
2. Basin stand MUST be secured to the floor. Use middle lugs (Fasteners not supplied). Rear Access Panel may be removed to facilitate access.

## BASIN ASSEMBLY

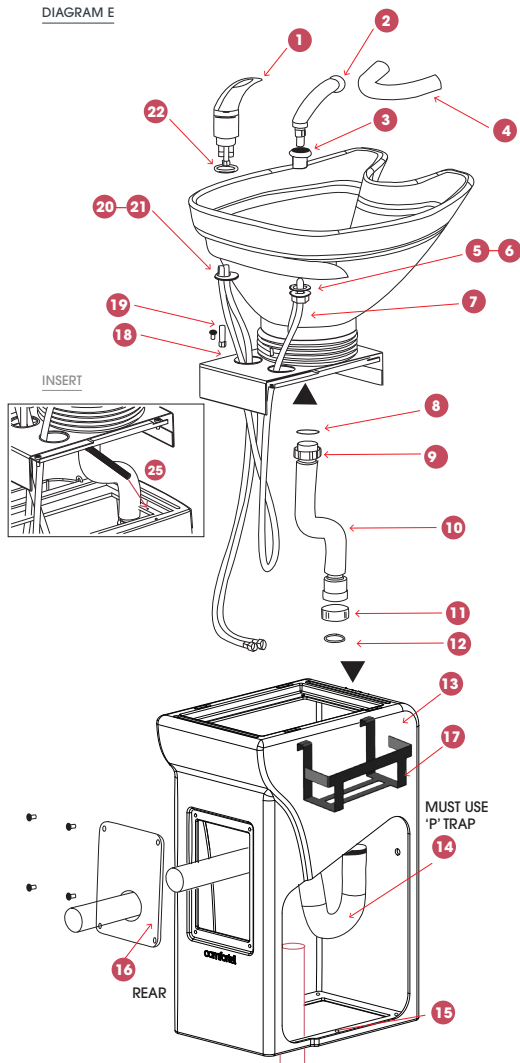
3. Install Flick Mixer using O-ring, plastic and metal washers & (Long Nut) and Shower Head using the Showerhose Basin Collar, O-ring, Foam Washer & Plastic Nut as indicated.
4. Place Flick Mixer and Shower Head Hoses through the holes in the Vinyl Strap.
5. Connect Flexible Waste Pipe to Plug and Waste which is already installed making use of the with Flat Seal and fitted Flange.

## STAND-BASIN ASSEMBLY PLUMBING CONNECTION

6. Connect Flexible Waste Pipe to P trap (not supplied) making use of Seal and Flange.
7. Using four screws found on top of Stand, fix assembled Basin to stand making use of holes at end of rail channels.
8. Connect hot and cold (½" connection) water braided hoses to respective supplies.
9. Connect Basin Spring which is already connected to the tilt and slide plate to the hole in the stand at the top left corner. (See insert)
10. Place both ends of Vinyl Cover into the slots provided on front and back of Stand.
11. Please attach Comfortneck to the basin.
12. Fit Shampoo Tray (optional extra) to the side of your choice.

# INSTALLATION & ASSEMBLY: BASIN STAND II WITH XL BASIN OPTION

DIAGRAM E



## COMFORTEL PRODUCT

#10001-1B BASIN STAND II WITH WHITE OR BLACK BASIN XL

### BEFORE INSTALLING YOU SHOULD CONSIDER THE FOLLOWING:

Allow for the necessary room around the unit for free movement.

- If installing against a wall, a minimum distance of 80mm between wall and bottom back of stand is required to allow free backward movement of basin.
- If plumbing location is in wall (see Diagram A), drill a hole in rear wall of stand. For neatness of finish it is preferable to bring water and waste into the stand in the same hole.
- If plumbing location is on floor (see Diagram A), place stand over.

### STAND ASSEMBLY

1. Position stand as required. If plumbing location is in wall drill hole in rear of stand; if plumbing location is on the floor place stand over. (P trap not supplied).
2. Basin stand **MUST** be secured to the floor. Use the floor mount holes (Fasteners not supplied). Rear Access Panel may be removed to facilitate access.

### BASIN ASSEMBLY

3. Install Flick Mixer using O-ring, plastic and metal washers & (Long Nut) and Shower Head using the Showerhose Basin Collar, O-ring, Foam Washer & Plastic Nut as indicated.
4. Place Flick Mixer and Shower Head Hoses through the holes in the Vinyl Strap.
5. Connect Flexible Waste Pipe to Plug and Waste which is already installed making use of the with Flat Seal and fitted Flange.

### STAND-BASIN ASSEMBLY PLUMBING CONNECTION

6. Connect Flexible Waste Pipe to P trap (not supplied) making use of Seal and Flange.
7. Using four screws found on top of Stand, fix assembled Basin to stand making use of holes at end of rail channels.
8. Connect hot and cold (½" connection) water braided hoses to respective supplies.
9. **Connect Basin Spring** which is already connected to the tilt and slide plate to the hole in the stand at the top left corner. (See insert)
10. Place both ends of Vinyl Cover into the slots provided on front and back of Stand.
11. Please attach Comforteck to the basin.
12. Fit Shampoo Tray (optional extra) to the side of your choice.

### BASIN ASSEMBLY

- |                           |                                  |
|---------------------------|----------------------------------|
| 1 Flick Mixer             | 13 Stand                         |
| 2 Showerhead              | 14 P trap (not supplied)         |
| 3 Showerhose basin collar | 15 Floor Mount Holes             |
| 4 Comforteck              | 16 Rear Access Panel             |
| 5 Foam washers            | 17 Shampoo tray (optional extra) |
| 6 Plastic nut             | 18 Vinyl strap                   |
| 7 Showerhead hose         | 19 Long nut                      |
| 8 Flat seal               | 20 Plastic washers               |
| 9 Fitted flange           | 21 Metal washers                 |
| 10 Flexible waste pipe    | 22 O-ring                        |
| 11 Flange                 | 23 Basin Spring                  |
| 12 Seal                   |                                  |

## WASHING FROM BEHIND BENCH CONFIGURATION

#10010-20 BENCH KIT WHITE OR BLACK BASIN  
#10020-21 BASIN BENCH DOUBLE X 2

Technical drawing of a four-lane escalator system. The top view shows four lanes, each 700 units wide, with a total width of 3200 units. The side view shows the height of the system, with a total height of 400 units. The drawing includes dimensions for the width of each lane (700), the total width (3200), and the height (400). The drawing also shows the internal structure of the escalator, including the handrails and the steps.

[illegible]

GRAM D

Technical drawing of the Gram D machine, showing side and front views with dimensions.

Dimensions (mm):

- Overall width: 2310
- Front view width segments: 330, 1080, 400, 500
- Overall height: 650

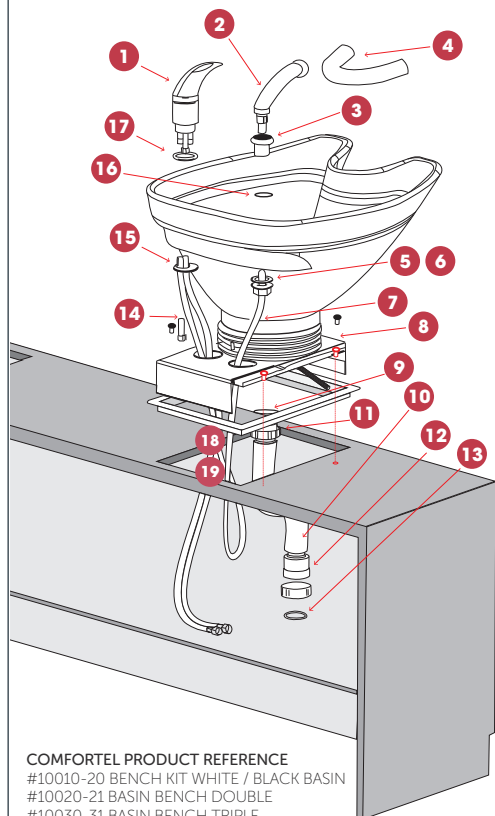
## BASIN BENCH KIT

Choose this option if a bench kit is purchased. Basin Bench Kit is available in 2 or 3. For a 4 Position Bench, please see 4 Position Diagram, where 2 x Basin Bench Doubles are installed next to each other. Basin Bench Kit is recommended for situations requiring washing from behind when the plumbing is not through the floor.

For more information about the product go to [www.comfortel.com.au](http://www.comfortel.com.au).

# INSTALLATION & ASSEMBLY: BENCH KIT OPTION

DIAGRAM F



## COMFOTEL PRODUCT REFERENCE

#10010-20 BENCH KIT WHITE / BLACK BASIN  
 #10020-21 BASIN BENCH DOUBLE  
 #10030-31 BASIN BENCH TRIPLE

## BASIN ASSEMBLY

- |                           |                            |
|---------------------------|----------------------------|
| 1 Flick Mixer             | 11 Fitted flange           |
| 2 Showerhead              | 12 Flange                  |
| 3 Showerhose Basin Collar | 13 Seal                    |
| 4 Comfortneck             | 14 Long nut                |
| 5 Foam Washer             | 15 Plastic & Metal Washers |
| 6 Plastic Nut             | 16 O-ring                  |
| 7 Showerhead hose         | 17 O-ring                  |
| 8 Vinyl Strap             | 18 Basin spring            |
| 9 Flat seal               | 19 Bench Kit Frame         |
| 10 Flexible Waste Pipe    |                            |

## BENCH FIXING DETAIL

1. Position Bench as required.
2. Bench must be secured to the floor, or wall. (Fasteners not provided)
3. Seal base – seal the base of the bench inside and outside with silicone.

## BASIN ASSEMBLY

4. Install Flick Mixer using the O-ring, plastic and metal washers & Long Nut, and Showerhead using the Showerhose Basin Collar, O-ring, Foam Washer and Plastic Nut as indicated.
5. Place Flick Mixer and Showerhead Hoses through the holes in the Vinyl Strap.
6. Connect Flexible Waste Pipe to Plug and Waste which is already installed making use of end with Flat Seal and fitted flange.

## BENCH KIT ASSEMBLY

7. Using 4x40mm Stainless Steel bolts with spring washers and nuts (supplied) fix Bench Kit Frame to top of Bench.
8. Connect hot and cold (1/2" connection) water braided hoses to respective supplies.
9. Connect Flexible Waste Pipe (supplied) to P Trap (not supplied) making use of Seal and Flange.
10. Connect Basin Spring which is already connected to the tilt and slide plate to the hole in the Bench Kit Frame at the front left corner.
11. Place both ends of Vinyl Cover into the slots provided on front and back of Bench Kit Frame.



## IMPORTANT

ALL PLUMBING MUST BE COMPLETED  
 BY A LICENSED PLUMBER



## IMPORTANT

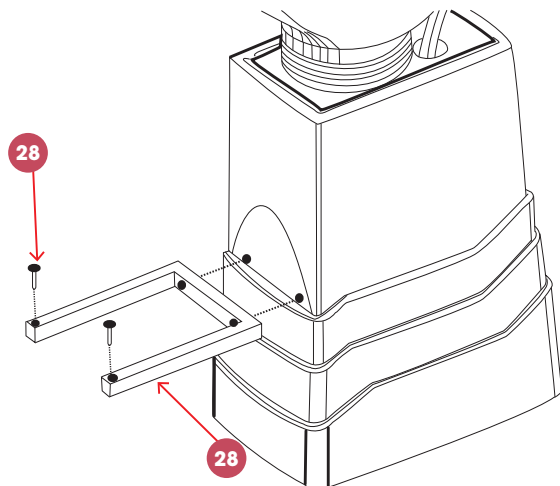
GPO'S MUST BE INSTALLED BY A QUALIFIED  
 ELECTRICIAN IN ACCORDANCE WITH  
 AUSTRALIAN STANDARDS.

## INSTALLATION & ASSEMBLY: CHAIR TO BASIN STAND

DIAGRAM G **28** Connector

### INSTALL CHAIR TO BASIN STAND

- Fix Connector to stand front using two bolts and nuts provided.



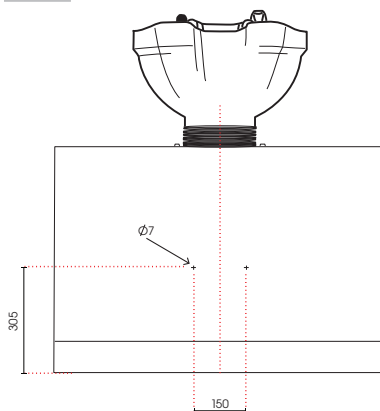
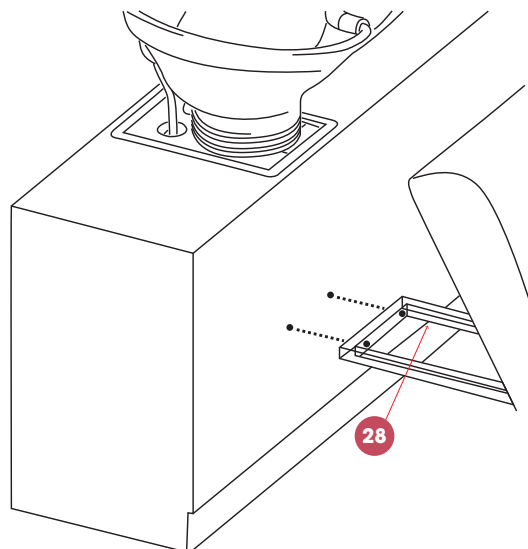
## INSTALLATION & ASSEMBLY: CHAIR TO BASIN BENCH

DIAGRAM H **28** Connector

### INSTALL CHAIR TO BASIN BENCH

- Fix Connector to Bench front using two bolts and nuts provided. Refer to sketch for drilling details.
- It is recommended to install these brackets before installing bench for easy access.

DIAGRAM I





## MAINTENANCE

A periodic inspection of all components and fasteners should be made to ensure that your Comfortel Product is structurally intact and functioning properly.

Damaged and broken parts should be replaced and loose fasteners tightened.

All maintenance to be carried out by a suitably qualified tradesperson.

### HOW TO CHANGE A SHOWERHEAD

Please view our online video on how to change a showerhead:

[www.youtube.com/user/Comfortel](http://www.youtube.com/user/Comfortel)

## CLEANING

### UPHOLSTERY

- All upholstery needs some care; good housekeeping will help to prolong the life of any upholstered products.
- Avoid extreme temperatures. Extreme cold can make your vinyl prone to cracking, while extreme heat can cause permanent stretching.
- Avoid exposing to direct sunlight for prolonged periods of time.

### ALWAYS FOLLOW THE CLEANING INSTRUCTIONS

- Clean regularly (weekly) to remove body oils which cause hardening
- To clean use a sponge which has been moistened in warm soapy water
- After cleaning with a sponge, dry with a soft, clean cloth
- Stubborn grime may require gentle scrubbing with a soft brush

### Do not use:

- |             |                      |              |
|-------------|----------------------|--------------|
| · acetone   | · furniture polishes | · bleach     |
| · detergent | · abrasive cleaners  | · steel wool |

Damage caused by any improper treatment of this product is not covered by the product warranty.

# comfortel

[help.comfortel.com.au](http://help.comfortel.com.au)

### PRODUCT CODE

#1537 ELLEN WASH LOUNGE

Revision Date: V1.31.07.2019

©Comfortel Furniture. All rights are reserved. No part of this document may be photocopied, reproduced or translated to another language without written consent of Comfortel Furniture Pty Ltd.

The information contained in this document is subject to change without notice and should not be construed as a commitment by Comfortel Furniture Pty Ltd.

Comfortel Furniture Pty Ltd. assumes no responsibility for any errors that may appear in this document nor does it make expressed or implied warranty of any kind with regard to this material, including, but not limited to, the implied warranties of merchantability and fitness for a particular purpose.

Comfortel Furniture Pty Ltd. shall not be liable for incidental or consequential damages in connection with or arising out of the use of this document and the program material.

### **PLEASE RETAIN THIS INFORMATION FOR FUTURE REFERENCE**

For more information about our products and services, contact us at [comfortel.com.au](http://comfortel.com.au)

**PURCHASE DATE**

**INVOICE NUMBER**

**NOTE YOUR PURCHASE DATE & INVOICE NUMBER FOR FUTURE REFERENCE**