

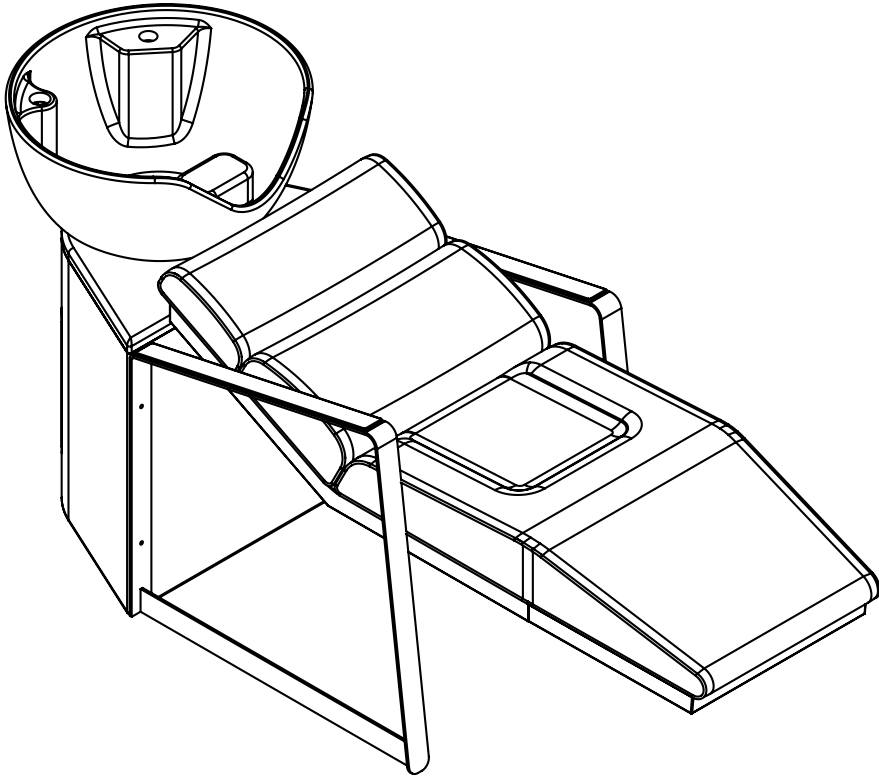
# vivian washlounge

#1465  
#1470

VIVIAN SAGE GREEN  
VIVIAN BLACK

#1460

VIVIAN BASIN STAND WITH WHITE BASIN





## IMPORTANT PLEASE READ THESE SAFETY INSTRUCTIONS

### GENERAL SAFETY

1. Read carefully and keep these instructions in a safe place.
2. Use this product only for its intended function and do not use attachments not recommended by the manufacturer.
3. Do not use outdoors.

### PLUMBING

1. This unit must be plumbed by a licensed plumber.



### IMPORTANT

ALL PLUMBING MUST BE COMPLETED BY A LICENSED PLUMBER



### IMPORTANT

DO NOT ALLOW CHILDREN AROUND THE WASHLOUNGE WHEN IN USE

## GET STARTED

### VIVIAN

Wash Lounge

Total Width: 620mm (24.4")

Internal Seat Width: 520mm (20.5")

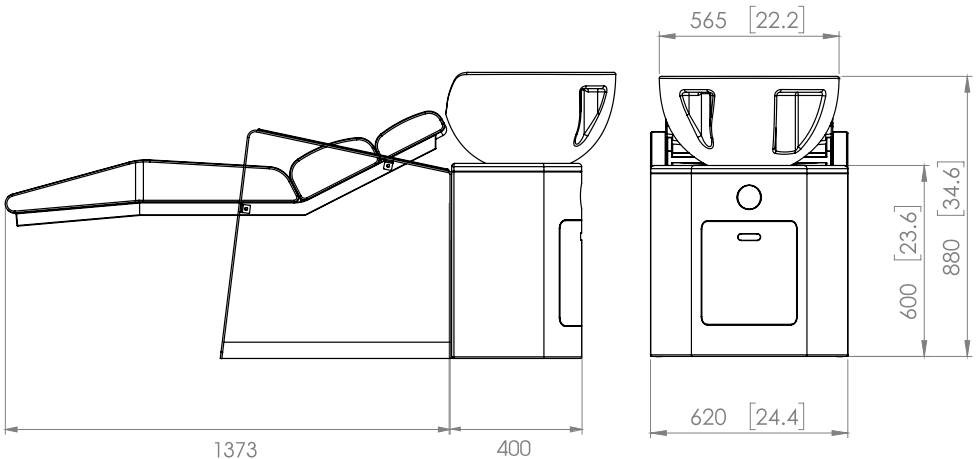
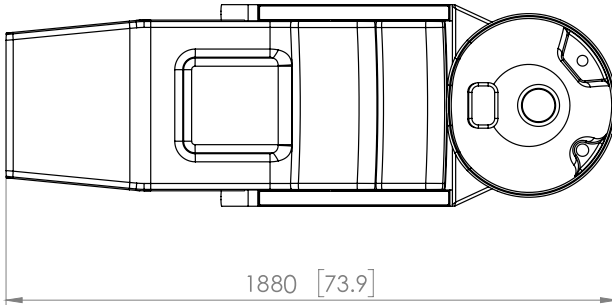
Total Length: 1880mm (73.9")

Basin Height: 880mm (34.6")

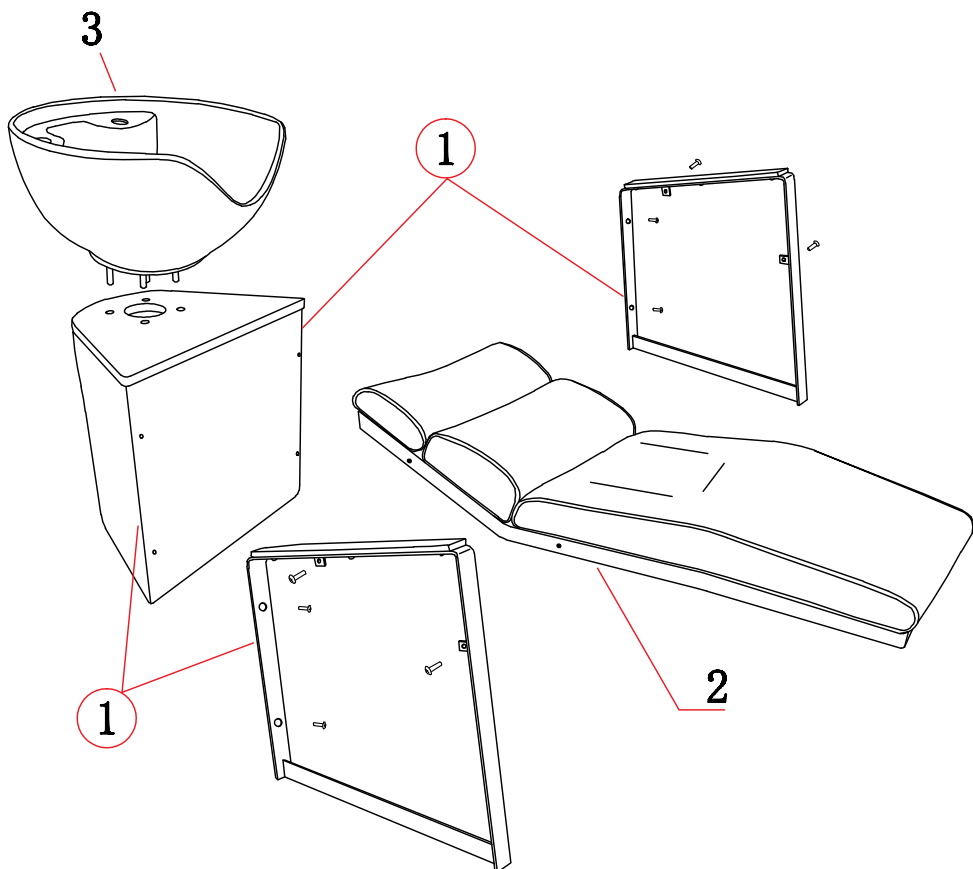
Water consumption: 5L p/m



WELS RATING



## INSTALLATION & ASSEMBLY



### WASHLOUNGE ASSEMBLY

1. Install both arms to the basin stand using screws supplied.
2. Install the lounge seat and fix with screws supplied.
3. Fix basin ready to install plumbing

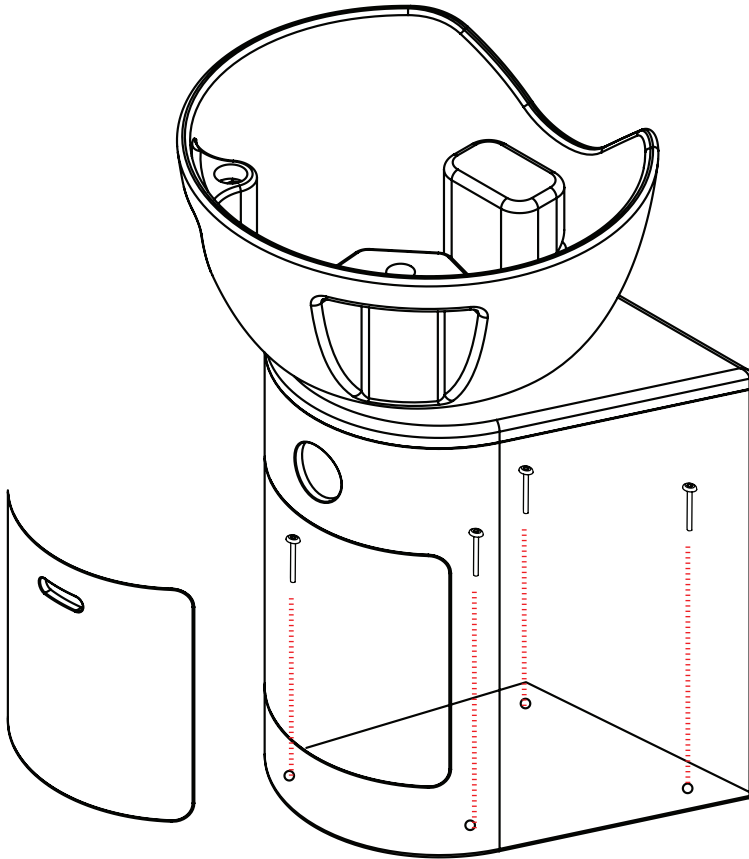


We recommend while assembling the washlounge according to the assembly order, fix screws and nuts, however do not tighten in full.

Once the washlounge is fully assembled, adjust the balance of the chair and lock each screw tight.

## GET STARTED

BEFORE INSTALLATION OF PLUMBING  
SECURE AND BOLT DOWN BASIN STAND

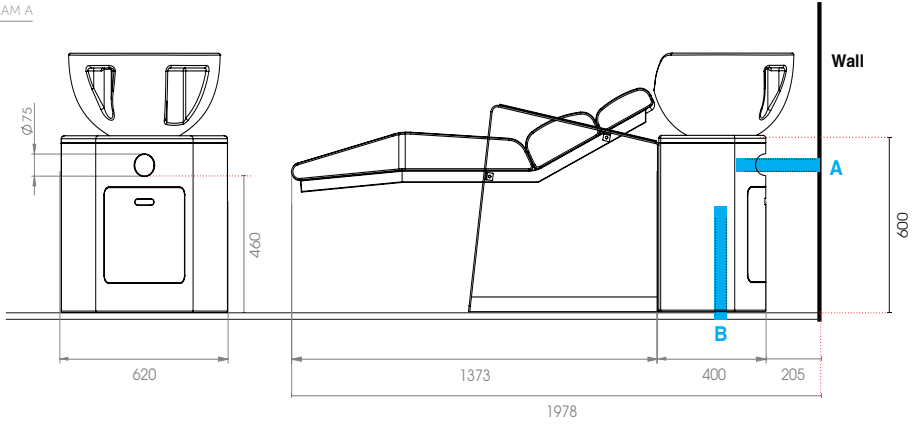


**THE WASHLOUNGE MUST BE SECURED TO THE FLOOR.**

Making sure your wash lounge is secure to the floor using appropriate fixings (not supplied).

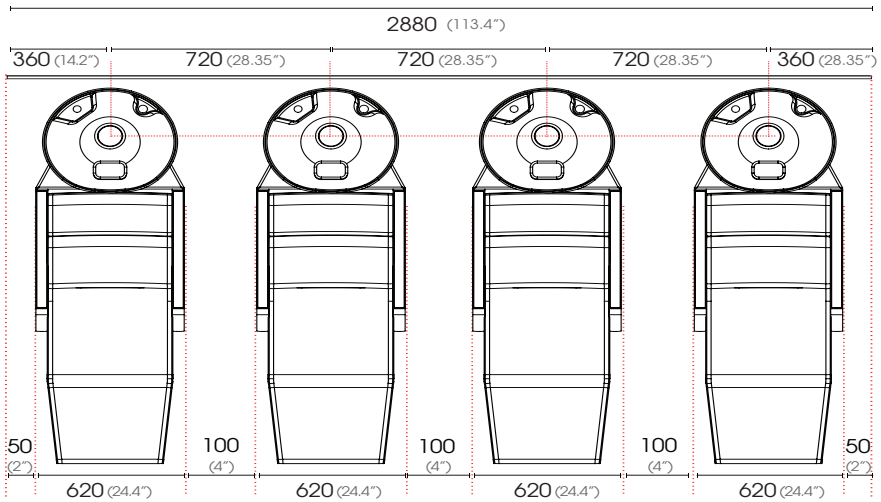
# POSITIONING

DIAGRAM A



If washing from behind, allow a minimum of 400mm of space behind your washlounge to provide room for access.

DIAGRAM B



If washing from side add 400mm between each basin. All measurements in mm.

## BEFORE INSTALLING YOU SHOULD CONSIDER THE FOLLOWING

- Allow for the necessary room around the unit for free movement.
- If installing against a wall, a minimum distance of 80mm between wall and bottom back of basin.
- If plumbing location is in wall (see Diagram A). For neatness of finish it is preferable to bring water and waste into the washlounge in the same hole.
- If plumbing location is on floor (see Diagram A), place washlounge over.

## PLUMBING ACCESS OPTIONS

Determine the best way to connect plumbing.

### OPTION A: FROM WALL TO BASIN STAND

From behind the basin stand connect plumbing to the wall

### OPTION B: FROM FLOOR IN BASIN STAND

From the basin stand connect plumbing to the floor

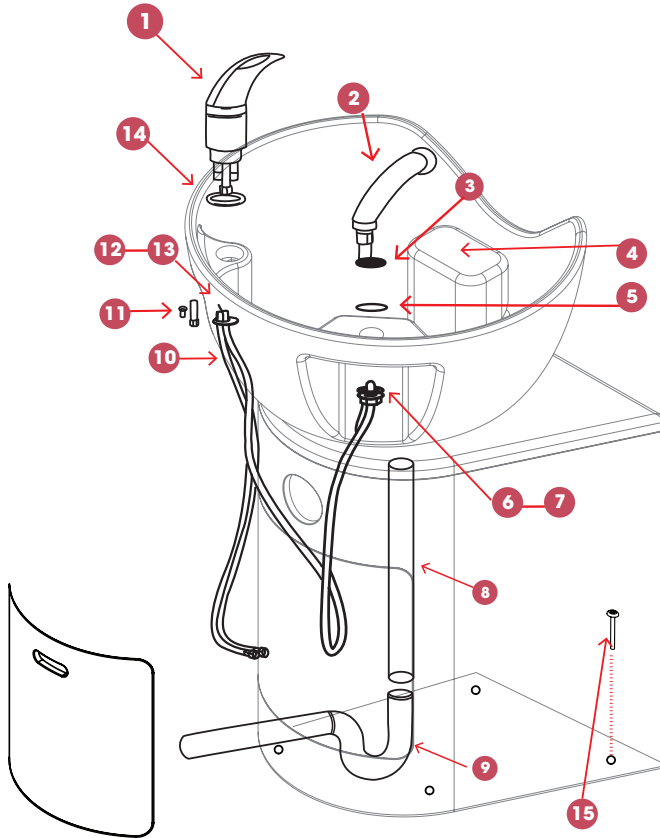


## IMPORTANT

ALL PLUMBING MUST BE COMPLETED BY A LICENSED PLUMBER

# ASSEMBLY

DIAGRAM C



## BASIN ASSEMBLY

- 1 Flick Mixer
- 2 Showerhead
- 3 Showerhose basin collar
- 4 Head Pad
- 5 O-ring
- 6 Foam washers
- 7 Plastic nut
- 8 PVC Pipe (not supplied)
- 9 P Trap (not supplied)
- 10 Hot & cold braided hoses
- 11 Long nut
- 12 Plastic washers
- 13 Metal washers
- 14 O-ring
- 15 Floor Fixing (x4) (not supplied)

## WASHLOUNGE ASSEMBLY

1. Washlounge **MUST** be secured to the floor. Secure to the floor using appropriate fixings (not supplied).

## BASIN ASSEMBLY

2. Install Flick Mixer using O-ring, plastic and metal washers & (Long Nut) and Shower Head using the Showerhose Basin Collar, O-ring, Foam Washer & Plastic Nut as indicated.
3. Place Flick Mixer and Shower Head Hoses through the holes in the basin.

## PLUMBING CONNECTION

4. Connect PVC pipe (not supplied) and P trap (not supplied) to 40mm Plug & Waste (supplied) already installed in the basin.
5. Connect hot and cold (1/2" connection) braided hoses to respective supplies.

## CLEANING

### UPHOLSTERY

All upholstery needs some care; good housekeeping will help to prolong the life of any upholstered products. Avoid extreme temperatures. Extreme cold can make your vinyl prone to cracking, while extreme heat can cause permanent stretching. Avoid exposing your products to direct sunlight for prolonged periods of time.

### ALWAYS FOLLOW THE CLEANING INSTRUCTIONS

- Wipe with a clean colourfast cloth dampened with mild alkaline free soap and luke warm water. Do not wet excessively.
- Remove all traces of any cleaning product by wiping with fresh water and a clean cloth.
- Dry with a soft, clean cloth.
- Stubborn grime may require gentle scrubbing with a soft brush.

### Do not use:

- hot or boiling water
- hydrocarbons including alcohol
- acetone
- furniture polishes
- bleach
- concentrated detergents
- abrasive powder or paste cleaners
- steel wool
- silicon or petroleum-based cleaners
- solvent based or abrasive cleaning agents

## MAINTENANCE

A periodic inspection of all components and fasteners should be made to ensure that your Comfortel Product is structurally intact and functioning properly.

Damaged and broken parts should be replaced and loose fasteners tightened.

All maintenance to be carried out by a suitably qualified tradesperson.

### HOW TO CHANGE A SHOWERHEAD

For more support & help, including troubleshooting videos, refer to our help & support center website [help.comfortel.com.au](http://help.comfortel.com.au)



[help.comfortel.com.au](http://help.comfortel.com.au)

Revision Date: 22.07.2021

©Comfortel Furniture. All rights are reserved. No part of this document may be photocopied, reproduced or translated to another language without written consent of Comfortel Furniture Pty Ltd.

The information contained in this document is subject to change without notice and should not be construed as a commitment by Comfortel Furniture Pty Ltd.

Comfortel Furniture Pty Ltd. assumes no responsibility for any errors that may appear in this document nor does it make expressed or implied warranty of any kind with regard to this material, including, but not limited to, the implied warranties of merchantability and fitness for a particular purpose.

Comfortel Furniture Pty Ltd. shall not be liable for incidental or consequential damages in connection with or arising out of the use of this document and the program material.

**PLEASE RETAIN THIS INFORMATION FOR FUTURE REFERENCE**

For more information about our products and services, contact us at [comfortel.com.au](http://comfortel.com.au)

**WARRANTY PERIOD**

**TERMS AND CONDITIONS.** For more information about our warranty, please refer to our website.

PURCHASE DATE

INVOICE NUMBER

NOTE YOUR PURCHASE DATE & INVOICE NUMBER FOR FUTURE REFERENCE