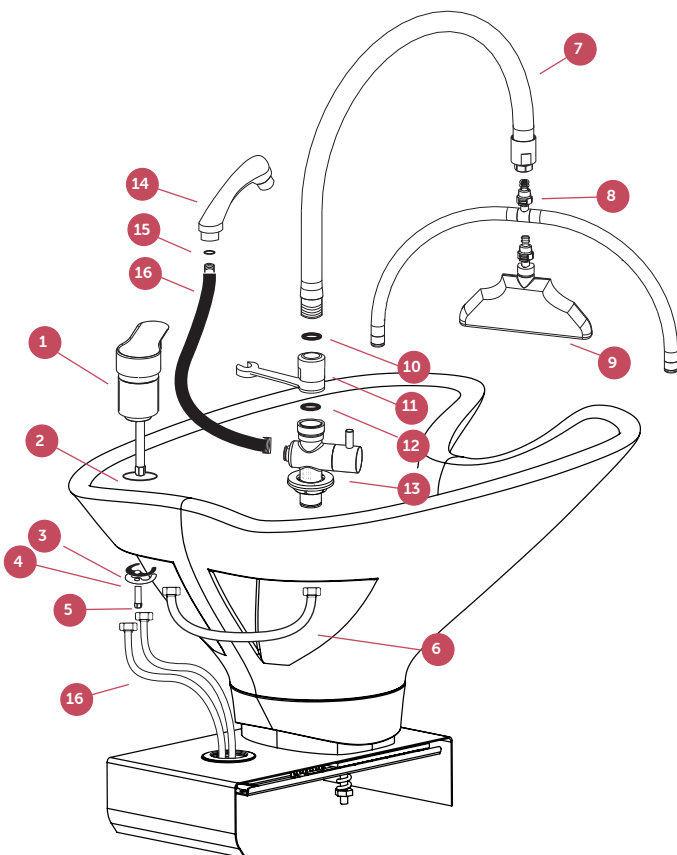


### ! IMPORTANT

ALL PLUMBING MUST  
BE COMPLETED BY A  
LICENSED PLUMBER

### PARTS

- 1 Flick Mixer
- 2 O-Ring
- 3 Rubber washer
- 4 Metal washer
- 5 Long nut
- 6 Small Water Supply Hose
- 7 QuickConnect Flexible Arm
- 8 Head Spa Rainfall Head
- 9 Head Spa Rainfall Head
- 10 Rubber Washer
- 11 Showerhead Cradle
- 12 Rubber Washer
- 13 Diverter Valve
- 14 Showerhead
- 15 Rubber washer
- 16 Black Showerhead Hose



### HEAD SPA PRO TAP SET PLUMBING INSTALLATION

#### Install Flick Mixer

- Insert Flick Mixer (1) with O-Ring (2) into the basin hole.
- From underneath, secure with washers (3)(4) and long nut (5).
- Connect Small Water Supply Hose (6) to the tap.

#### Assemble Diverter, Showerhead Cradle & Flexible Arm

- Fit Rubber Washer (12) to the top of the Diverter Valve (13)
- Fit Showerhead Cradle (11) into the diverter valve body
- Fit Rubber Washer (10) and screw the QuickConnect Flexible Arm (7) to the top outlet of the diverter

#### Install Diverter Assembly into Basin

- Insert the assembled Diverter Valve into the basin hole.
- Secure the cradle from underneath using the fixing nut
- Connect the other end of the Small Water Supply Hose (6) to the base of the cradle

#### Install Showerhead

- Insert Rubber Washer and Connect Black Showerhead Hose (16) to Showerhead (14) and to the side port of Diverter Valve (13)
- Insert Showerhead into the cradle (11) on the basin

#### Connect Hot and Cold Water Supply

- Attach the hot & cold (1/2" connection) braided hoses (16) from the Flick Mixer (1) to your hot and cold plumbing

#### Attach HeadSpa Heads

- Fit the QuickConnect Flexible Arm with Head Spa Rainfall Head (8) or Head Spa Waterfall Head (9)



## IMPORTANT PLEASE READ THESE SAFETY INSTRUCTIONS

### GENERAL SAFETY

1. Read carefully and keep these instructions in a safe place.
2. Use this product only for its intended function and do not use attachments not recommended by the manufacturer.
3. Do not use outdoors.

### PLUMBING

1. This unit must be plumbed by a licensed plumber.



### IMPORTANT

**ALL PLUMBING MUST BE COMPLETED  
BY A LICENSED PLUMBER**



### IMPORTANT

**DO NOT ALLOW CHILDREN AROUND  
THE WASHLOUNGE WHEN IN USE**

# comfortel

[help.comfortel.com.au](https://help.comfortel.com.au)

#### PRODUCT CODE

#10191.01.B HEADSPA SHAMPOO BASIN TAPSET  
- GUN METAL STAINLESS STEEL

The information contained in this document is subject to change without notice and should not be construed as a commitment by Comfortel Furniture Pty Ltd.

Comfortel Furniture Pty Ltd. assumes no responsibility for any errors that may appear in this document nor does it make expressed or implied warranty of any kind with regard to this material, including, but not limited to, the implied warranties of merchantability and fitness for a particular purpose.

Comfortel Furniture Pty Ltd. shall not be liable for incidental or consequential damages in connection with or arising out of the use of this document and the program material.

©Comfortel Furniture. All rights are reserved. No part of this document may be photocopied, reproduced or translated to another language without written consent of Comfortel Furniture Pty Ltd.

#### **PLEASE RETAIN THIS INFORMATION FOR FUTURE REFERENCE**

For more information about our products and services, contact us at [comfortel.com.au](https://comfortel.com.au)

#### WARRANTY PERIOD

TERMS AND CONDITIONS. For more information about our warranty, please refer to our website.

PURCHASE DATE

INVOICE NUMBER

NOTE YOUR PURCHASE DATE & INVOICE NUMBER FOR FUTURE REFERENCE