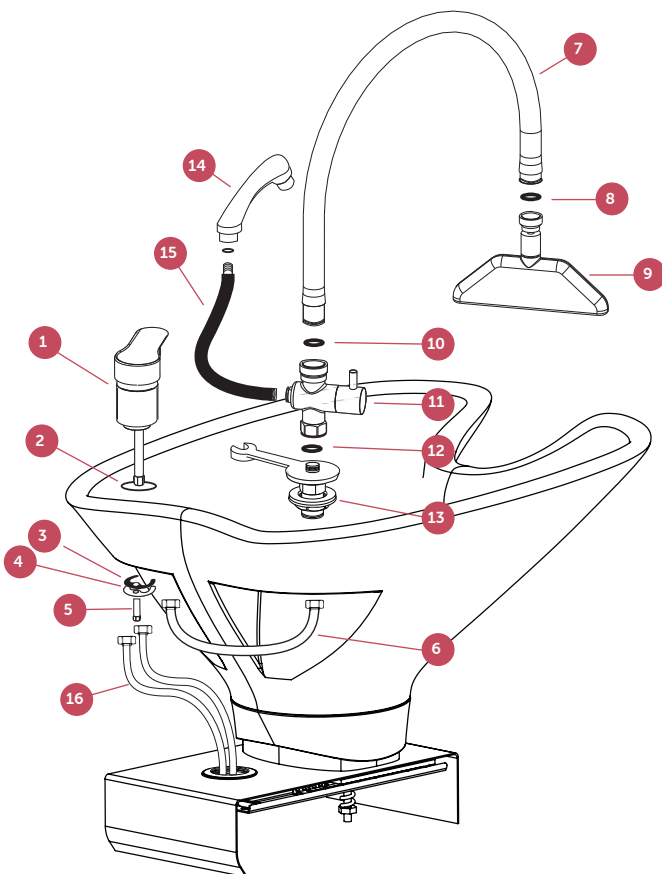


! IMPORTANT
ALL PLUMBING MUST
BE COMPLETED BY A
LICENSED PLUMBER

PARTS

- 1 Flick Mixer
- 2 O-Ring
- 3 Rubber washer
- 4 Metal washer
- 5 Long nut
- 6 Small Water Supply Hose
- 7 Gooseneck Hose
- 8 Rubber Washer
- 9 HeadSpa Outlet
- 10 Rubber Washer
- 11 Diverter Valve
- 12 Rubber Washer
- 13 Showerhead Cradle
- 14 Showerhead
- 15 Black Showerhead Hose
- 16 Hot & Cold Braided Hoses



HEAD SPA TAP SET & HOSE INSTALLATION

Install Flick Mixer

- Insert Flick Mixer (1) with O-Ring (2) into the basin hole.
- From underneath, secure with washers (3)(4) and long nut (5).
- Connect Small Water Supply Hose (6) to the tap.

Connect Gooseneck Hose & HeadSpa Outlet

- Fit a Rubber Washer (8) into the end of the Gooseneck Hose (7) and screw HeadSpa Outlet (9) into place securely.

Connect Gooseneck Hose to Diverter Valve

- Fit Rubber Washer (10) into the other end of the Gooseneck Hose (7).
- Screw Gooseneck Hose (7) to the top outlet of Diverter Valve (11)
- Ensure rubber washer (12) is the base of Diverter Valve (11) and secure to Showerhead Cradle (13)

Install Showerhead Cradle

- Insert Showerhead Cradle (13) into the basin hole.
- Secure with the fixing nut from underneath.
- Connect Small Water Supply Hose (6) to the base of the cradle.

Install Showerhead

- Connect Black Showerhead Hose (15) to Showerhead (14) and to the side port of Diverter Valve (11).
- Insert Showerhead into the cradle (13) on the basin.

Connect Hot and Cold Water Supply

- Attach the hot & cold (1/2" connection) braided hoses (16) from the Flick Mixer (1) to your hot and cold plumbing.

Continue to install plumbing as indicated in your product.



IMPORTANT PLEASE READ THESE SAFETY INSTRUCTIONS

GENERAL SAFETY

1. Read carefully and keep these instructions in a safe place.
2. Use this product only for its intended function and do not use attachments not recommended by the manufacturer.
3. Do not use outdoors.

PLUMBING

1. This unit must be plumbed by a licensed plumber.



IMPORTANT
ALL PLUMBING MUST BE COMPLETED
BY A LICENSED PLUMBER



IMPORTANT
DO NOT ALLOW CHILDREN AROUND
THE WASHLOUNGE WHEN IN USE

comfortel

help.comfortel.com.au

PRODUCT CODE

#10191.01.B HEADSPA SHAMPOO BASIN TAPSET
- GUN METAL STAINLESS STEEL

The information contained in this document is subject to change without notice and should not be construed as a commitment by Comfortel Furniture Pty Ltd.

Comfortel Furniture Pty Ltd. assumes no responsibility for any errors that may appear in this document nor does it make expressed or implied warranty of any kind with regard to this material, including, but not limited to, the implied warranties of merchantability and fitness for a particular purpose.

Comfortel Furniture Pty Ltd. shall not be liable for incidental or consequential damages in connection with or arising out of the use of this document and the program material.

©Comfortel Furniture. All rights are reserved. No part of this document may be photocopied, reproduced or translated to another language without written consent of Comfortel Furniture Pty Ltd.

PLEASE RETAIN THIS INFORMATION FOR FUTURE REFERENCE

For more information about our products and services, contact us at comfortel.com.au

WARRANTY PERIOD

TERMS AND CONDITIONS. For more information about our warranty, please refer to our website.

PURCHASE DATE

INVOICE NUMBER

NOTE YOUR PURCHASE DATE & INVOICE NUMBER FOR FUTURE REFERENCE